



# 2025 AG PRODUCT CATALOGUE

**Seeding Openers  
Disc Scrapers  
Fertilizer Knives  
Hydraulic Kits**





# ATOM-JET GUARANTEE

Atom-Jet Guarantee



Celebrating Over 60 Years  
In Business With Over  
35 Years in Agriculture



Atom-Jet is committed to providing the highest quality products and unmatched customer service. We do this by operating quality controlled manufacturing facilities, employing exceptional people, and partnering with qualified dealers. At the heart of this philosophy is the Atom-Jet 100% Money-Back Guarantee, which is not matched by any other opener manufacturer in the market today. Unlike other guarantees, ours is not prorated. If your agricultural product has not performed to your satisfaction within the first year (12 months from purchase) **our sales and service team, in cooperation with your local dealer, will come to your farm to correct the problem.** If they cannot, Atom-Jet will refund 100% of your money.\*

\*Atom-Jet Money-Back Guarantee: Atom-Jet will provide a 100% money back guarantee on openers purchased within one year of the ship date provided the following conditions are met; otherwise, the guarantee becomes null and void: 1. Atom-Jet is notified within 1 year from date of sale. 2. The Atom-Jet service team was granted access to resolve the concern at the time of occurrence. 3. Openers were not operated under adverse tripping conditions (ie. 500+lbs. trip pressure) or in untillable conditions.

# CONTENTS

We're located at Monitor, Alberta, and we're a mixed farm operation with both cattle and grain.

We've been running Atom-Jet openers since 2001. We are farming over a large distance with lots of different soil types so we went with the Atom-Jets because they had a guarantee of no plugging; we tried them and we've been using them ever since.

The Atom-Jet openers are very durable; with hard surfacing every 5,000 acres we were able to get 32,000 acres out of one set of boots.

We're now running the new High-Rate Side Bands; in our area we're running some lighter sandy lands, so the more separation we can get between seed and fertilizer means less chance of crop damage.

I do recommend Atom-Jet openers. I've been an advocate since our first season with them. They work well, they're simple, and with hardsurface rebuilding, they're economical. — **Charles Chrisp, Monitor, AB**



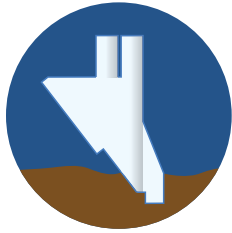
Atom-Jet Agriculture Guarantee	2
Atom-Jet Advantage	4
Seed Placement	12

## OPENERS FOR...

C-Shank	16
Morris Contour & Quantum	20
Bourgault Paralink	24
CNH Flex Hoe	36
Concord Edge On	38
Morris Maxim	40
Case IH 700 / NH P2060	42
Versatile	44
Hoe Drills	46
Precision Disc Scrapers for Case IH 500/NH P2080	48
Scrapers for Case IH SDX Systems	54
John Deere 1870 ConservaPak	56
NH3 Fertilizer Knives	60
Strip Till Knives	64
Potato Hiller Tines	66

Hydraulic Systems – Closed-Center	68
Hydraulic Systems – Open-Center	70
Parts & Accessories	72
Things to Know	74
Installation	77
Research & Development	78

# ATOM-JET ADVANTAGE



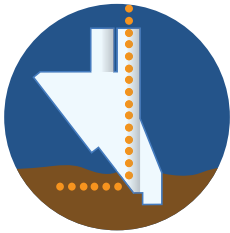
## SOIL DISTURBANCE

- The shape and form of our vertical design causes the soil to be split, nearly eliminating the throw that comes with bulkier horizontal openers.
- This reduces the risk of not retaining enough soil to cover the seed, or causing stepping.



## TRASH CLEARANCE

Our vertical design and rounded seed tube helps the trash to ride up the point and clear quickly without building up.



## SEED AND FERTILIZER PLACEMENT

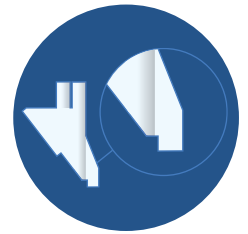
Our vertically designed opener has the ability to place the seed on a firm seedbed immediately after opening the soil, eliminating seed bounce and soil-bed fracturing.

- With our shorter profile, closure is achieved in a very short amount of travel, creating accurate seed placement.
- Competitors' horizontal design drives the seed against the direction of travel, resulting in seed bounce and poor overall placement.



## ROCKS

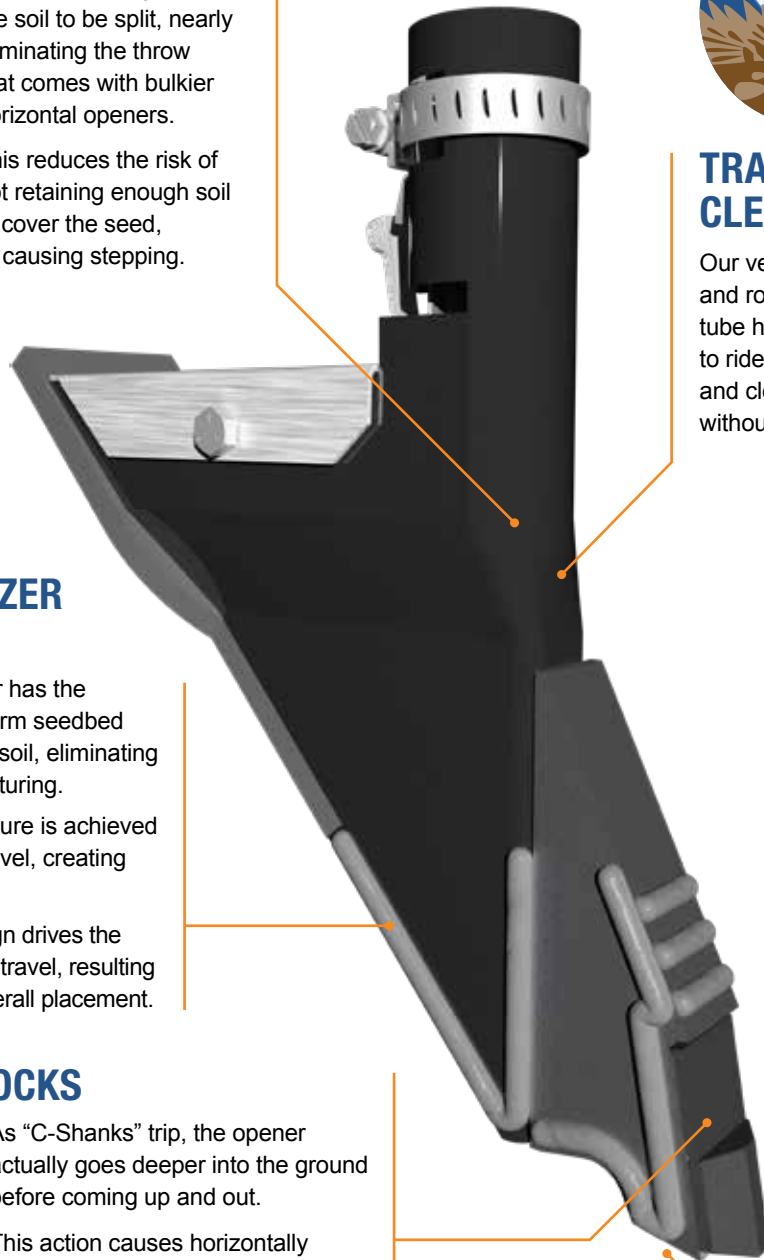
- As "C-Shanks" trip, the opener actually goes deeper into the ground before coming up and out. This action causes horizontally designed openers to be some of the best rock picking tools available.
- With our vertically designed opener, the point produces a shape that is more likely to float across the top of the stone, rather than pull it up.



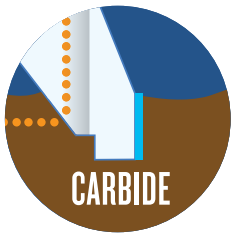
## NO-PLUG TECHNOLOGY

Through vertical design, mud blockage and plugging have been virtually eliminated.

- The curved area under the point, or "mud spur", is made to inhibit soil from "orange peeling".
- Competitors' horizontal designs precipitate the mud curl travelling up and into the rear of the opener.

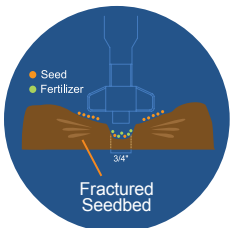






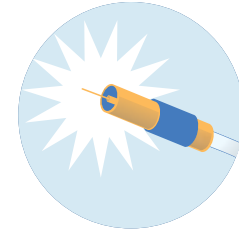
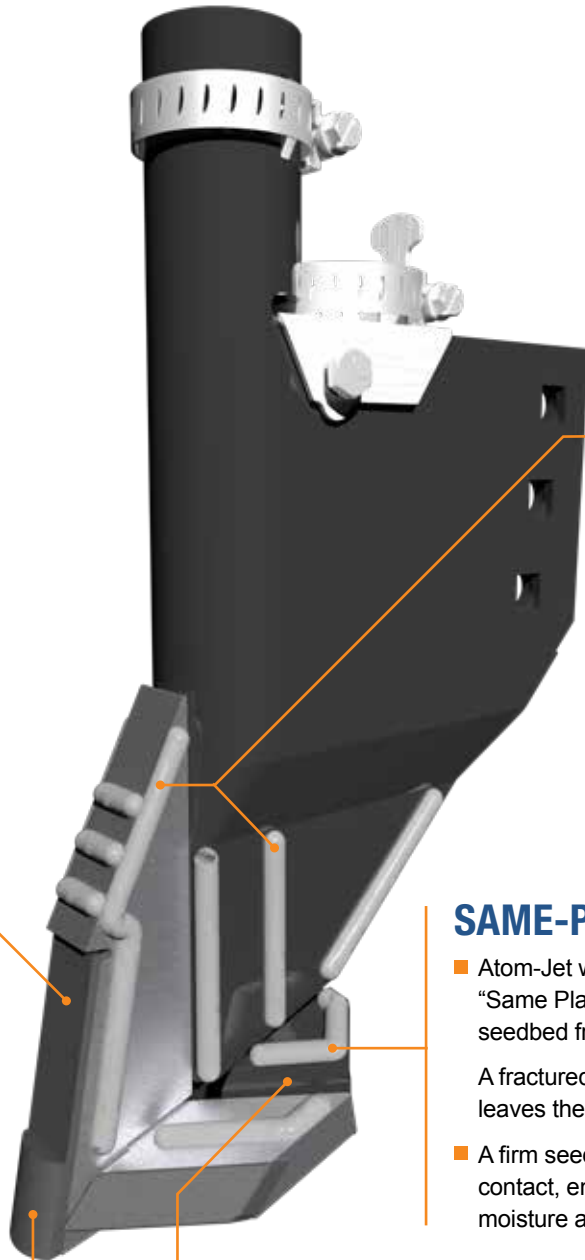
## CARBIDES

- For over 30 years we have delivered the ultimate in tungsten carbide technology to producers around the globe.
- With continued research into carbide grade, shape, and installation techniques, we continue to provide the longevity our customers require.



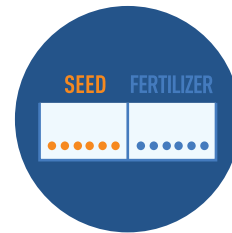
## CONCERNS WITH LOWER POINT OPENERS

- Fractures the seedbed, allowing the stored moisture to escape leading to the risk of uneven germination.
- Increases the potential for seed to mix in with fertilizer as the seed rolls down the shoulder of the furrow into the fertilizer band.



## MAINTAINABLE

- Atom-Jet openers are formed from quality steel plate, and fortified with high-grade hard surfacing.
- All hard-surfacing can be renewed to its original condition. We recommend checking all beads after each season.



## SAME-PLANE PLACEMENT

- Atom-Jet was the first to implement "Same Plane" placement to prevent the seedbed from fracturing.
- A fractured seedbed dries out quicker and leaves the potential for uneven germination.
- A firm seedbed produces good seed-to-soil contact, enabling enhanced absorption of moisture and nutrients by the seed.

## CHUTE SIZE

- Atom-Jet openers have the largest seed-gallery on the market.
- This allows for seeding of broader seeds such as peas and beans.
- The large chute allows the seeds to easily pass through, reducing the risk of plugging.



# HIGH-RATE SIDE BAND OPENERS

## SINGLE-PASS APPLICATION

Designed for users who want to safely apply higher rates of nitrogen in a single pass.

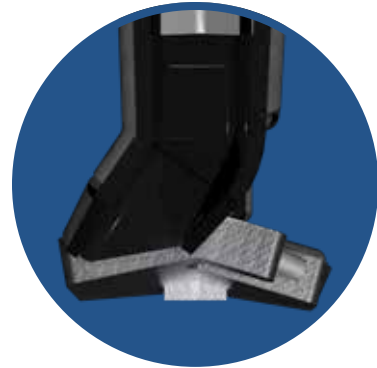


## SEED / FERTILIZER SEPARATION

Average of 2.5" of separation between the seed and fertilizer bands seen during testing with proper fan speeds set.

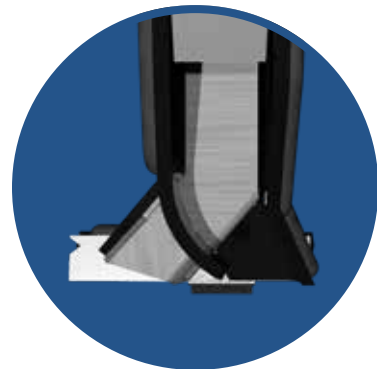
## SAME-PLANE PLACEMENT

Same-plane placement of seed and fertilizer eliminates excess seedbed crumbling and helps leave the seed to germinate on a firm, moist seedbed.



## GRANULAR OR LIQUID FERTILIZER

Our High-Rate line of openers are offered for either granular fertilizer application, or for liquid fertilizer with the fertilizer tube directing the liquid down into the soil safely away from the seed.

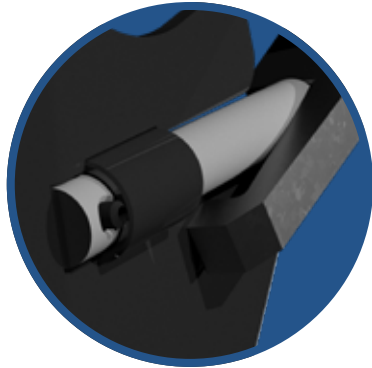


## STAINLESS STEEL CHUTE

Stainless steel chute directs either seed or fertilizer out behind the main side band wing, while the curved rear chute directs product to the opposite side behind the  $\frac{5}{8}$ " high-rate wing.



# MID-ROW BANDING SCRAPERS



## TALLER SCRAPER PROFILE

Taller scraper profile helps keep trash from building up between the disc and scraper.

## MOUNTING ARM LOCK

Lock built into mounting arm keeps scraper from winging away from the disc, keeping trash from plugging between the scraper and disc.

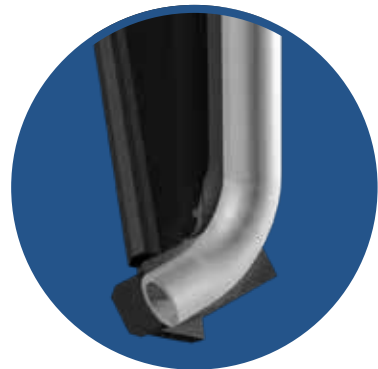
## ADAPTABLE LINE SIZES

Standard 1/4" hose with connection sets to adapt to any incoming line size.



## ABRASION-RESISTANT PLATE

Abrasion-resistant plate for longest life of the scraper.



## CARBIDE PROTECTION

Strategic carbide placement protects the highest wearing parts of the scraper. Additional carbide has been added along the bend line for 2025 edition scrapers.

## ANGLED WING

Angled wing and tube directs NH3 away from the disc to eliminate freezing.

# TWIN BAND OPENERS

## ADAPTABLE LINE SIZES

Standard  $\frac{3}{8}$ " stainless tube can be adapted to work with any incoming NH<sub>3</sub> line sizes, including MaxQuip pressure system.

## PITCHED WING

Wing is pitched downward to push product directly into the soil, sealing it in, minimizing gassing-off.

## SEED-NH<sub>3</sub> SEPARATION

Average distance between the NH<sub>3</sub> and seed bands is 3" keeping your seed safely away from the high nitrogen concentration.



## TRUE TRIPLE SHOOT CAPABILITY

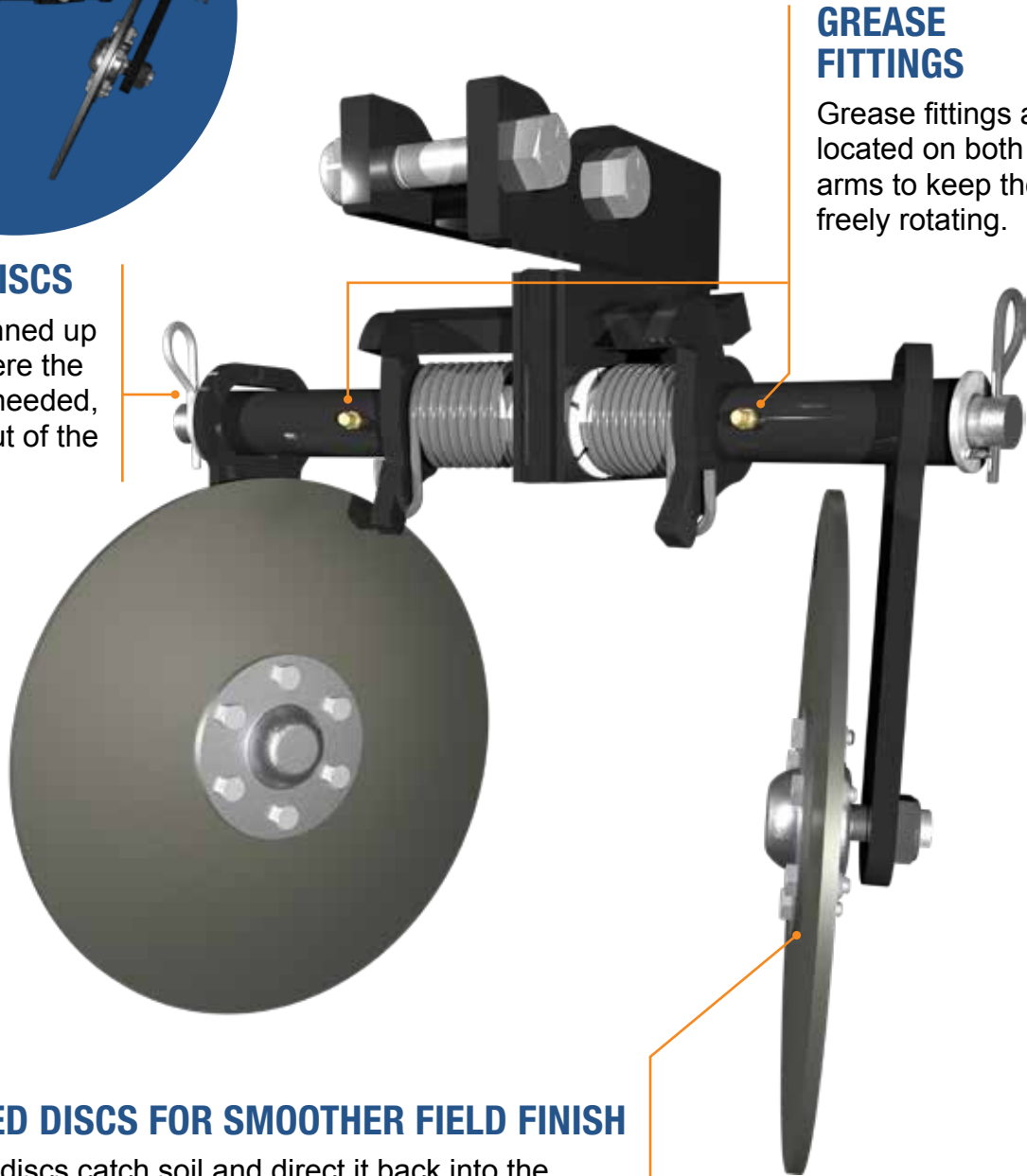
Design allows for seed to be placed out behind the wing on one side of the furrow. NH<sub>3</sub> is directed out to the opposite side to maximize distance between it and the seed. The third central chute is reserved for granular fertilizer application between the two bands.





## PINNED-UP DISCS

Discs can be pinned up in situations where the closers are not needed, keeping them out of the material flow.



## GREASE FITTINGS

Grease fittings are located on both arms to keep them freely rotating.

## ANGLED DISCS FOR SMOOTHER FIELD FINISH

Angled discs catch soil and direct it back into the furrow ahead of the packer tire. Reduces soil throw and stepping resulting in a smoother field finish. May also allow for increased travel speeds.

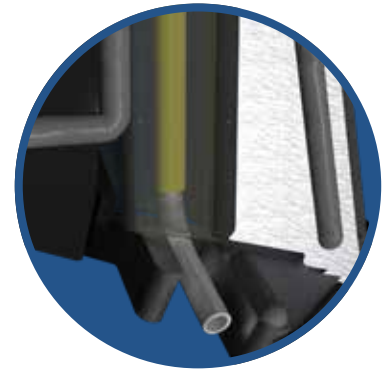
# EXTENDED SEPARATION SIDE BAND NH3 OPENERS

## ISOLATED DELIVERY TUBE

Stainless steel delivery tube is isolated from the boot and point to ensure product will not cause tube freezing.

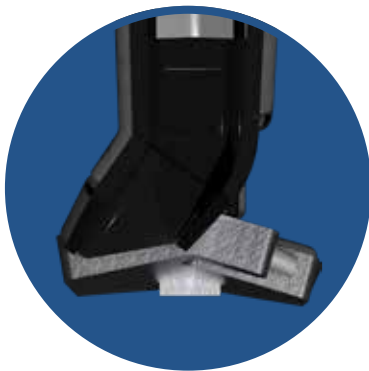
## ADAPTABLE LINE SIZE

Stainless steel NH3 delivery tube can be adapted to work with any incoming line size.



## TEMPERATURE ISOLATION

An additional silicone star tube is sleeved over the tube for further temperature isolation.



## INCREASED SEPARATION OF SEED AND NH3 BANDS

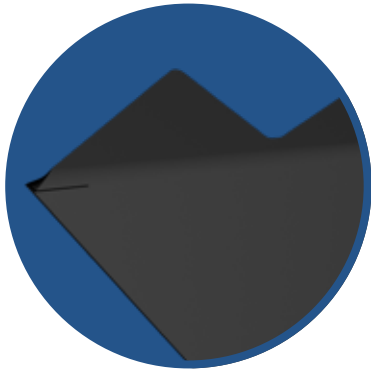
The ESSNH3 line of openers provide an increased separation distance between the seed and NH3 bands over our standard Side Band NH3 openers by directing seed out the curved chute to the opposite side of the furrow.

## VIRTUALLY ELIMINATE NH3 GASSING OFF

NH3 tube outflow is angled slightly down to direct the product deeper into the furrow to virtually eliminate NH3 gassing off.



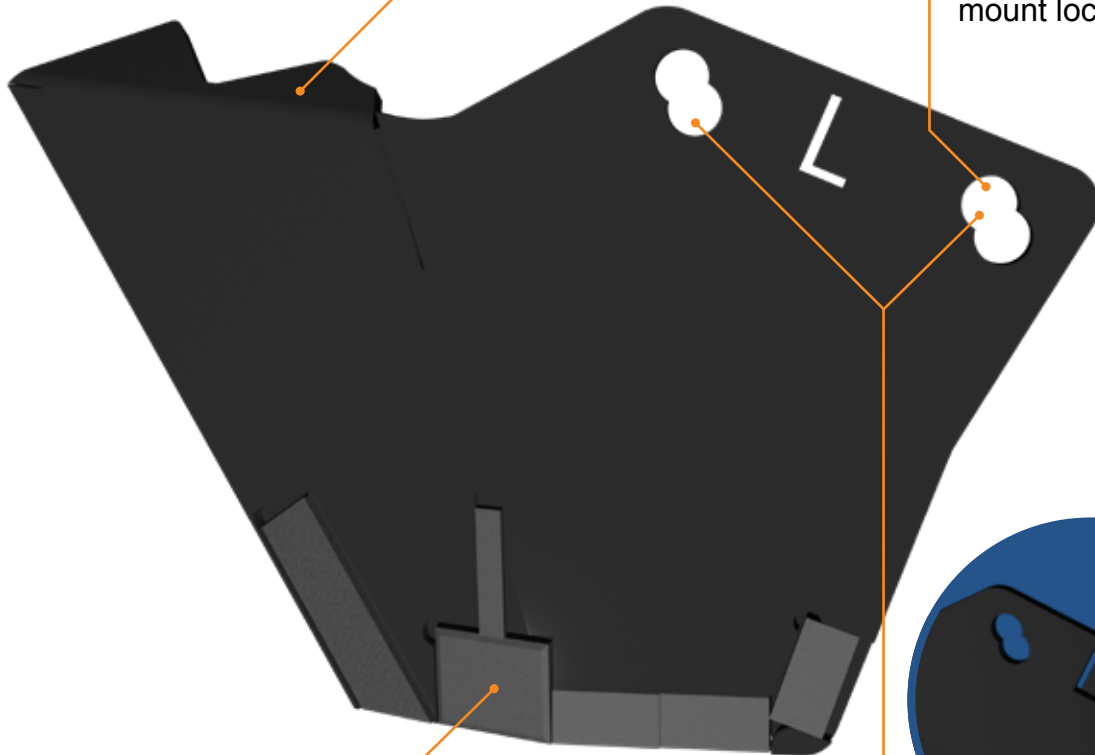
# CNH PRECISION DISC SCRAPERS



## INTEGRATED TRASH SHIELD

Integrated trash shield keeps straw from building up between the disc and scraper, eliminating plugging.

Scraper mounts directly to OEM mount locations.



## CARBIDE PROTECTION

Strategic carbide placement protects all high wear areas including the leading edge, bottom edge, and bends on the scraper.



## ADJUSTABLE POSITION

Two bolt holes allow users to adjust the scrapers up as the disc blades wear.

### TWIN BAND

- Superior separation between NH3 and seed
- Triple shoot capacity
- Allows for higher application rates of NH3



- G GRANULAR
- L LIQUID
- N NH3

### SIDE BAND GRANULAR

- Seed chute is carbide protected
- Separation between the seed and fertilizer
- Seed is placed accurately behind the point



- G GRANULAR

### SINGLE SHOOT SPREAD

- Creates a firm seedbed
- Provides greater seedbed utilization
- Benefits wider row spacing



- G GRANULAR

### SIDE BAND LIQUID

- Liquid tube protected in-behind the wing
- Fertilizer is allowed to stream out, providing better separation
- Accurate seed placement



- L LIQUID



## PAIRED ROW GRANULAR

- Firm seedbed produces superior seed to soil contact
- Even germination
- Consistent placement of fertilizer separating it from the seed



G GRANULAR

## SINGLE SHOOT

- Accurate seed placement
- Minimal soil disturbance
- Superior soil penetration



G GRANULAR

## HIGH-RATE SIDE BAND

- Seed and fertilizer are directed to opposite sides of the furrow for increased separation
- High application rates on same-plane with minimal increase in disturbance
- Seed and fertilizer bands are placed uniformly



G GRANULAR

## HIGH-RATE SIDE BAND LIQUID

- Can be used for Liquid or NH3
- Seed and fertilizer are directed to opposite sides of the furrow for increased separation and seed safety
- Allows for increased application of liquid fertilizer or increased safety for applying NH3



L LIQUID

N NH3

### PAIRED ROW LIQUID

- Firm seedbed produces superior seed to soil contact
- Even germination
- Consistent placement of fertilizer separating it from the seed



L LIQUID

### CONSERVAPAK SINGLE SHOOT

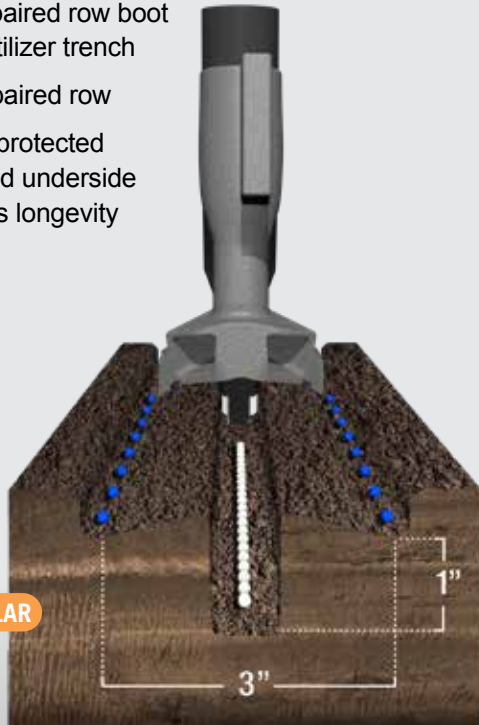
- Carbide protected point and chute
- Seed is placed on a shelf above the fertilizer
- Seed boot design allows for increased soil coverage



G GRANULAR  
L LIQUID  
N NH3

### CONSERVAPAK PAIRED ROW

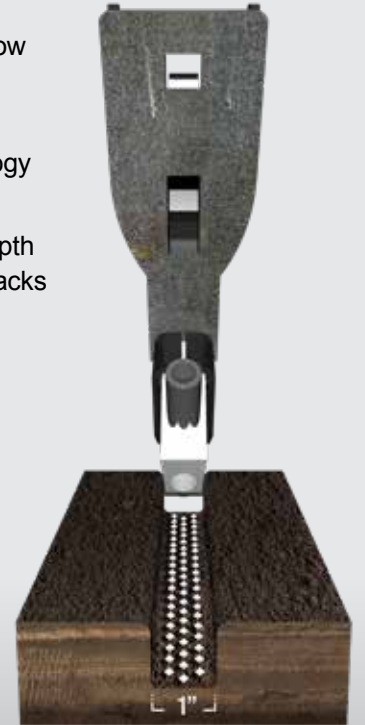
- Curved paired row boot seals fertilizer trench
- Distinct paired row
- Carbide protected wings and underside increases longevity



G GRANULAR  
L LIQUID  
N NH3

### FERTILIZER KNIVES

- Short opener profile allows for quick furrow closing, minimizing gassing off
- Non-freeze technology
- Can be adjusted to accommodate depth changes in wheel tracks



N NH3

### DUAL SHOOT LIQUID SCRAPER

- Advantage of double shooting for a one-pass application
- Excellent seed-fertilizer separation
- Seed placed accurately in the disc cut resulting in exceptional seed placement



L LIQUID

### SINGLE SHOOT SCRAPER

- Carbide protected leading edge
- Accurate seed placement in the disc cut
- Reduces hairpinning



### DUAL SHOOT GRANULAR SCRAPER

- Advantage of double shooting for one-pass application
- Excellent seed-fertilizer separation
- Seed is placed accurately on a shelf created by the wing



G GRANULAR

### MID-ROW BANDING SCRAPER

- Directs NH3 away from disc to prevent freezing
- Wing angle ensures NH3 trench seals, preventing gassing off
- Tube sizes to match all incoming line sizes



G GRANULAR

L LIQUID

N NH3



# OPENERS FOR C-SHANK

Atom-Jet openers are compatible with all varieties of C-Shank drills. With 30 years of experience developing openers, you can trust Atom-Jet to provide reliable, long-lasting, and rugged openers designed for all conditions. Originally designed for zero/minimum tillage, Atom-Jet C-Shank openers work great in all tillage and seeding practices.

- All wear points are carbide protected providing extended life
- Proven not to plug in the worst conditions – opener of choice in the Red River Valley (gumbo)
- Excellent seed placement and fertilizer separation achieved by the same-plane design
- Boots are made of a high gauge steel to protect against breaking
- Compatible with all C-shank drills



## C-SHANK

### PAIRED ROW GRANULAR

#### G GRANULAR

3" CCDTD0

4" CCETE0



**ALL MOUNTING HARDWARE INCLUDED**

**C-SHANK**

**SINGLE SHOOT**



**G GRANULAR**

3/4"	CCAA00
1"	CCAC00

**C-SHANK**

**SINGLE SHOOT SPREAD**



**G GRANULAR**

2"	CCPTR0
3"	CCBTD0
4"	CCCTE0

**C-SHANK**

**SINGLE SHOOT FRONT DELIVERY SPF**



**G GRANULAR**

**P LIQUID PHOS**

1"	CCAC0W
----	--------

**C-SHANK**

**PAIRED ROW LIQUID .250**



**L LIQUID**

3"	CCDTDM
4"	CCETEM

C-SHANK

SIDE BAND GRANULAR



G GRANULAR

3/4"	Left	CCGAA0
	Right	CCGAB0
1"	Left	CCGCA0
	Right	CCGCB0

C-SHANK

HIGH-RATE SIDE BAND GRANULAR



G GRANULAR

3/4"	Left	CCGAX0
	Right	CCGAY0
1"	Left	CCGCX0
	Right	CCGCY0

**i**  
SEE PAGE 6  
FOR MORE  
INFO

C-SHANK

SIDE BAND LIQUID .250



L LIQUID

3/4"	Left	CCFAA0
	Right	CCFAB0
1"	Left	CCFCA0
	Right	CCFCB0

C-SHANK

HIGH-RATE SIDE BAND LIQUID



L LIQUID

1/4" Tube	Left	CCFTF2
	Right	CCFTG2
3/8" Tube	Left	CCFTF3
	Right	CCFTG3



**C-SHANK**

**SIDE BAND  
LIQUID .375**



**L LIQUID**

3/4"	Left	CCFAAA
	Right	CCFABA
1"	Left	CCFCAA
	Right	CCFCBA

**C-SHANK**

**TWIN BAND**



**i**  
SEE PAGE 8  
FOR MORE  
INFO

**G GRANULAR**

**L LIQUID**

**N NH3**

Left	CCHTF0
Right	CCHTG0

**C-SHANK**

**SIDE BAND  
.500 NH3**



**N NH3**

3/4"	Left	CCJAH0
	Right	CCJAJ0
1"	Left	CCJCH0
	Right	CCJCJ0

**C-SHANK**

**EXTENDED  
SEPARATION  
SIDE BAND  
NH3**



**i**  
SEE PAGE 10  
FOR MORE  
INFO

**N NH3**

1/4" Tube	Left	CCJTF2
	Right	CCJTG2
3/8" Tube	Left	CCJTF3
	Right	CCJTG3



# OPENERS FOR MORRIS CONTOUR & QUANTUM

Atom-Jet openers get your crops off to the best start possible. Whether it's the Contour C1, C2, or the newly launched Quantum, Atom-Jet has the opener to fit your needs. The opener's leading-edge design maintains a true vertical position. Atom-Jet openers work in conjunction with Morris Contour's parallel linkage for ultra-precise seed and fertilizer placement, along with an improved ability to shed trash. This makes Atom-Jet openers a good fit for the Contour or Quantum drills.

- Non-plugging technology
- Simple all-steel construction improves wear and durability
- Excellent wear – all high-wear points, wings, and chutes are carbide protected
- The sleek design results in less steel running through the field, reducing draft
- Superior performance with a cost-effective opener



*I farm at Viscount, SK, about an hour east of Saskatoon. I use a Morris Contour 2 drill with a New Holland seed tank. I first came across Atom-Jet when the openers I originally had on the drill weren't performing in dry years. I wanted to move my drill to a triple shoot and they had an opener I felt would fit my farm and work well, and I've been very pleased with it.*

*I like the Twin Band because I put all the seed out one side, my granular down the middle, and then I put my anhydrous out the other side. What I like is that I get some seed and fertilizer separation; this has allowed me to adjust my blend to put more nitrogen closer in the granular band because I find the anhydrous band used to be too hot. I find I'm getting a better root base and the plants are using moisture more efficiently.*

*The Atom-Jet opener has been integral in making my farm more successful because I have been able to change my agronomy and where I place the fertilizer, along with lower soil disturbance. It's been a game changer for me.*  
**— Lee Morelli, Viscount, SK**



ALL MOUNTING HARDWARE INCLUDED

MORRIS  
CONTOUR

SINGLE  
SHOOT



G GRANULAR

3/4" CAAA00

1" CAAC00

MORRIS  
CONTOUR

1/2" SINGLE  
SHOOT



G GRANULAR

With patented carbide insert.  
Patent #9,066,462 B2

1/2" CAAS00

MORRIS  
CONTOUR

SINGLE  
SHOOT  
SPREAD



G GRANULAR

2" CAPTR0

3" CABTD0

4" CACTE0

MORRIS  
CONTOUR

TWIN BAND



SEE PAGE 8  
FOR MORE  
INFO

G GRANULAR

L LIQUID

N NH3

Left CAHTF0

Right CAHTG0



**MORRIS  
CONTOUR**

**SIDE BAND  
GRANULAR**

**G GRANULAR**

3/4"	Left	CAGAA0
	Right	CAGAB0
1"	Left	CAGCA0
	Right	CAGCB0



**MORRIS  
CONTOUR**

**HIGH-RATE  
SIDE BAND**

**G GRANULAR**

3/4"	Left	CAGAX0
	Right	CAGAY0
1"	Left	CAGCX0
	Right	CAGCY0



**i**  
SEE PAGE 6  
FOR MORE  
INFO

**MORRIS  
CONTOUR**

**SIDE BAND  
LIQUID .250**

**L LIQUID**

3/4"	Left	CAFAA0
	Right	CAFAB0
1"	Left	CAFCA0
	Right	CAFGB0



**MORRIS  
CONTOUR**

**HIGH-RATE  
SIDE BAND  
LIQUID**

**L LIQUID**

1/4" Tube	Left	CAFTF2
	Right	CAFTG2
3/8" Tube	Left	CAFTF3
	Right	CAFTG3



**PATENTED CARBIDE INSERT**

This opener was designed after requests from our customers in dry regions who wanted an ultra-low disturbance opener. The narrow point provides less soil disturbance, which in turn helps to keep the moisture in the furrow. With the narrower point, increased side pressure from the furrow usually wears thinner points out too quickly; therefore, the Atom-Jet R&D team designed a carbide insert to keep the point from washing out on the sides. This innovation was patented (9,066,462 B2) and has proven itself in Montana and Australia where drier conditions exist.



**MORRIS  
CONTOUR**

**3" PAIRED  
ROW  
GRANULAR**

**G GRANULAR**

**3" CADTD0**



**MORRIS  
CONTOUR**

**3" PAIRED  
ROW LIQUID**

**L LIQUID**

**3" CADTDM**



**MORRIS  
CONTOUR**

**4" PAIRED  
ROW**

**G GRANULAR**

**L LIQUID**

Liquid CAETEM

Granular CAETE0



**MORRIS  
CONTOUR**

**EXTENDED  
SEPARATION  
SIDE BAND NH3**

**N NH3**

1/4" Tube	Left	CAJTF2
	Right	CAJTG2

3/8" Tube	Left	CAJTF3
	Right	CAJTG3



**i**  
SEE PAGE 10  
FOR MORE  
INFO

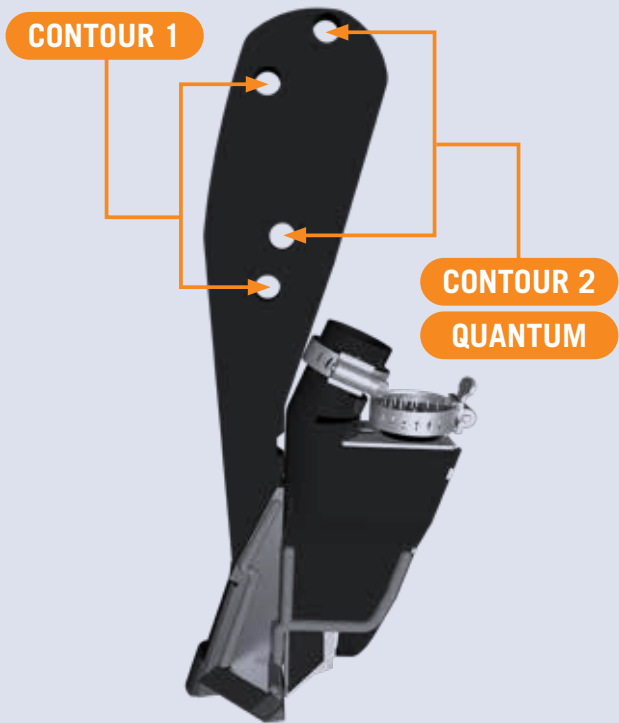
**BOLT HOLE GUIDE**

Atom-Jet openers are designed to be compatible with all Morris Contour 1, Contour 2, and Quantum drills. When mounting your openers to these drills, be sure to follow the bolt hole guide shown here.

**CONTOUR 1**

**CONTOUR 2**

**QUANTUM**





## OPENERS FOR BOURGAULT PARALINK

Atom-Jet's R&D team has developed our openers to fit the Bourgault Paralink drill's shank specifications. Our openers provide consistent ground penetration and constant seeding depth control over changing field terrain for fast, even germination. Atom-Jet openers work with all Bourgault Paralink drills, whether it's a 3310 PHD or all three configurations of 3320: SE, QDA, and XTC. Atom-Jet's patented Twin Band design for Paralink drills provides an option to Mid Row Banders.

### Twin Band benefits vs. Mid Row Banders:

- Initial cost savings
- Safe seed & fertilizer separation at higher rates
- Ability to apply granular, liquid, and NH3 fertilizer
- Better trash clearance
- Less maintenance
- Weight saving on equipment resulting in less wear and tear on equipment
- Less HP requirements



*We currently have four drills with Atom-Jet High-Rate Side Band openers. We've used their openers in the past and found them to be durable. The same-plane configuration is a benefit; putting the seed and fertilizer at the same level in the ground means that we can put the product in a little shallower and not worry about digging up the real wet soil below. I'd recommend Atom-Jet openers. We like what we've seen.*  
— **Ernie Warkentin, DeBolt, AB**



ALL MOUNTING HARDWARE INCLUDED

**BOURGAULT  
PARALINK**

**SINGLE  
SHOOT**



**G GRANULAR**

3/4"	CDAA00
1"	CDAC00

**BOURGAULT  
PARALINK**

**SINGLE  
SHOOT  
SPREAD**



**G GRANULAR**

2"	CDPTR0
3"	CDBTD0
4"	CDCTE0

**BOURGAULT  
PARALINK**

**SIDE BAND  
GRANULAR**



**G GRANULAR**

3/4"	Left	CDGAA0
	Right	CDGAB0
1"	Left	CBGCA0
	Right	CDGCB0

**BOURGAULT  
PARALINK**

**HIGH-RATE  
SIDE BAND  
GRANULAR**



**i**  
SEE PAGE 6  
FOR MORE  
INFO

**G GRANULAR**

3/4"	Left	CDGAX0
	Right	CDGAY0
1"	Left	CDGCX0
	Right	CDGCY0

Trademarks registered by CIH Flex Hoe 800, CNH P2070 Flex Hoe, Morris Contour & Bourgault Mid-Row Banders are used with permission. Atom-Jet openers are designed to fit OEM drills as replacement third-party products.



**BOURGAULT  
PARALINK**

**SIDE BAND  
LIQUID .250**



**L LIQUID**

3/4"	Left	CDFAA0
	Right	CDFAB0
1"	Left	CDFCA0
	Right	CDFCB0

**BOURGAULT  
PARALINK**

**HIGH-RATE  
SIDE BAND  
LIQUID**



**L LIQUID**

1/4" Tube	Left	CDFTF2
	Right	CDFTG2
3/8" Tube	Left	CDFTF3
	Right	CDFTG3

**BOURGAULT  
PARALINK**

**EXTENDED  
SEPARATION  
SIDE BAND  
NH3**



SEE PAGE 10  
FOR MORE  
INFO

**N NH3**

1/4" Tube	Left	CDJTF2
	Right	CDJTG2
3/8" Tube	Left	CDJTF3
	Right	CDJTG3

**BOURGAULT  
PARALINK**

**TWIN BAND**



SEE PAGE 8  
FOR MORE  
INFO

**G GRANULAR**

**L LIQUID**

**N NH3**

Left	CDHTF0
Right	CDHTG0

**BOURGAULT  
PARALINK**

**PAIRED ROW  
GRANULAR**



**G GRANULAR**

**3" CDDTD0**

**4" CDETE0**

**BOURGAULT  
PARALINK**

**PAIRED ROW  
LIQUID**



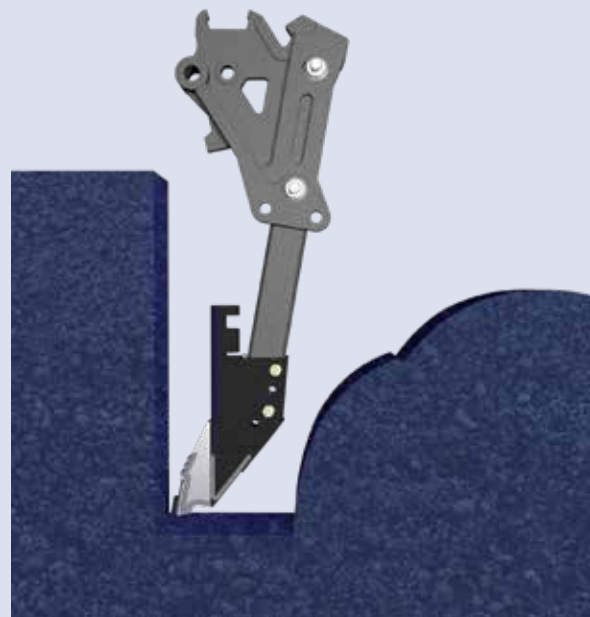
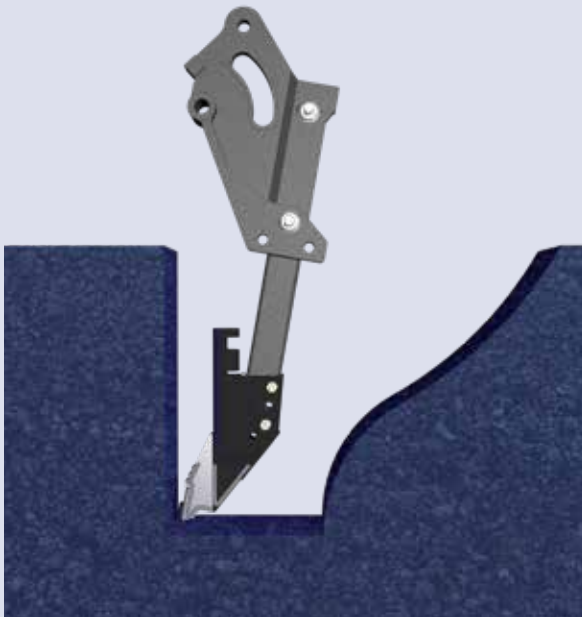
**L LIQUID**

**3" CDDTDM**

**4" CDETEM**

**DESIGN TOLERANCES**

Atom-Jet Openers fit within the design tolerances of Bourgault Paralink drills. Opener must fit within space allowed by the manufacturer.



**BOURGAULT**

**MID-ROW BANDER GRANULAR SCRAPER (Complete With Arm)**



**G GRANULAR**

Series 2.5	Left	DMCL00C25
	Right	DMCR00C25
Series 3	Left	DMCL00C
	Right	DMCR00C

**BOURGAULT**

**MID-ROW BANDER GRANULAR SCRAPER (Replacement)**



**G GRANULAR**

Series 2.5	Left	DMCL0025
	Right	DMCR0025
Series 3	Left	DMCL00
	Right	DMCR00

**BOURGAULT**

**MID-ROW BANDER SCRAPER MOUNTING ARM**



Series 2.5	Left	DMZDNCL25
	Right	DMZDNCR25



Series 3	Left	DMZDNCL
	Right	DMZDNCR

**BOURGAULT**

**MID-ROW BANDER SERIES 3 SCRAPER  
(Complete With Arm)**

All scrapers come with a 1/4" NH3 tube and a tube adapter to match incoming lines.

**i**  
SEE PAGE 7  
FOR MORE  
INFO



**NH3 Tubes**

**N NH3**

1/4" Tube	Left	DMEL12C
	Right	DMER12C
3/8" Tube	Left	DMEL13C
	Right	DMER13C
1/2" Tube	Left	DMEL14C
	Right	DMER14C

**M MAX QUIP**

**Max-Quip Tube**

0.085" Tube	Left	DMEL28C
	Right	DMER28C

**BOURGAULT**

**MID-ROW BANDER SERIES 3  
SCRAPER (Replacement)**

**NH3 Tubes**

**N NH3**

1/4" Tube	Left	DMEL12
	Right	DMER12
3/8" Tube	Left	DMEL13
	Right	DMER13
1/2" Tube	Left	DMEL14
	Right	DMER14

**M MAX QUIP**

**Max-Quip Tube**

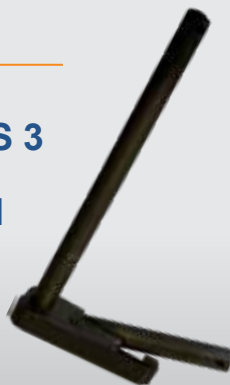
0.085" Tube	Left	DMEL28
	Right	DMER28



**BOURGAULT**

**MID-ROW BANDER SERIES 3  
SCRAPER MOUNTING ARM**

Left	DMZDNCL
Right	DMZDNCR



**INSTALLATION**  
youtu.be/  
7-weKuXqrE4



**INSTALLATION GUIDE**  
agriculture.atomjet.com/  
mrb-scraper-install



**BOURGAULT**

**MID-ROW BANDER SERIES 2.5 SCRAPER**

(Complete With Arm)

All scrapers come with a 1/4" NH3 tube and a tube adapter to match incoming lines.

**i**  
SEE PAGE 7  
FOR MORE  
INFO



**NH3 Tubes**

**N NH3**

1/4" Tube	Left	DMEL12C25
	Right	DMER12C25
3/8" Tube	Left	DMEL13C25
	Right	DMER13C25
1/2" Tube	Left	DMEL14C25
	Right	DMER14C25

**M MAX QUIP**

**Max-Quip Tube**

0.085" Tube	Left	DMEL28C25
	Right	DMER28C25

**BOURGAULT**

**MID-ROW BANDER SERIES 2.5 SCRAPER (Replacement)**

**NH3 Tubes**

**N NH3**

1/4" Tube	Left	DMEL1225
	Right	DMER1225
3/8" Tube	Left	DMEL1325
	Right	DMER1325
1/2" Tube	Left	DMEL1425
	Right	DMER1425

**M MAX QUIP**

**Max-Quip Tube**

0.085" Tube	Left	DMEL2825
	Right	DMER2825



**BOURGAULT**

**MID-ROW BANDER SERIES 2.5 SCRAPER MOUNTING ARM**

Left	DMZDNCL25
Right	DMZDNCR25



**INSTALLATION**  
youtu.be/  
-ZSneX7GAc0



**INSTALLATION GUIDE**  
agriculture.atomjet.com/  
mrb-scraper-install

## MID-ROW BANDER CONNECTIONS

Incoming Line Size	0.250" ID	0.375" ID	0.500" ID	0.085" ID	0.250" OD
<b>Scraper Part No.</b>	DMEL12 DMER12	DMEL13 DMER13	DMEL14 DMER14	DMEL28 DMER28	Call for .250D scraper part #
<b>Tube Adapter Set</b>	1 × #4 Hose Clamp	2 × #4 Hose Clamp 1 × #6 Hose Clamp 1 × ¼"-⅜" Barb 2" NH3 Tube Joint	3 × #4 Hose Clamp 1 × #6 Hose Clamp 1 × ¼"-½" Barb 2" NH3 Tube Joint	1 × #4 Hose Clamp	1 × Compression Fitting
					
		 <p><b>INSTALLATION GUIDE</b>  <a href="http://agriculture.atomjet.com/hose-connection-set-install">agriculture.atomjet.com/hose-connection-set-install</a></p>			
<b>Cost</b>	Included				Included



*My brother and I have been farming for approximately 40 years. We farm around 7,000 acres in the Melfort area. This area has pretty heavy clay soils that can retain moisture. We typically grow beans, peas, wheat, oats, and corn.*

*We have a 3320 Bourgault drill and like the operation of the drill but have had trouble with the mid-row banders since we purchased the drill. When it's wet the straw would get in between the disc and scraper and would force the blade off the disc, plugging the unit and forcing us to stop and get it cleaned out. With the Atom-Jet scraper that we have now, it's a way bigger scraper that keeps the straw from getting in there to plug the unit.*

*We started using the Atom-Jet Mid-Row Banding Scrapers about three years ago now, and we've had no issues at all. We've probably put around 20,000 acres on them and can't see any wear at all. The Atom-Jet Mid-Row Banding Scrapers have helped our farm immensely for the simple reason that we don't have any added downtime now. We don't need to stop three or four times between fills to clean out the Bourgault scrapers. — Will Vanderbyl, Melfort, SK*

**BOURGAULT PARALINK**  
**ROW CLOSERS**



RDX000



**INSTALLATION GUIDE**  
[agriculture.atomjet.com/  
bp-row-closers-install](http://agriculture.atomjet.com/bp-row-closers-install)



*My father, brother, and I run a mixed operation near Gilbert Plains, Manitoba. Three years ago when we purchased an XTC drill, we chose the Atom-Jet 3" Paired Row openers for our operation for a few reasons. First, we wanted some separation between seed and fertilizer as fertilizer rates get higher, and the paired row gives us that separation, as well as better utilization. We liked the one-piece design, thinking it would last in our rocky, abrasive ground—and it has. After three years we have yet to replace one opener. The carbide and hard surfacing have minimized the wear on the openers, and our daily maintenance has dropped from tightening bolts every day on our old drill down to absolutely nothing. The vertical design mounted in front of the shank helps offset the short distance between shank and packer and doesn't hook and pull out rocks like we used to with our old openers.*



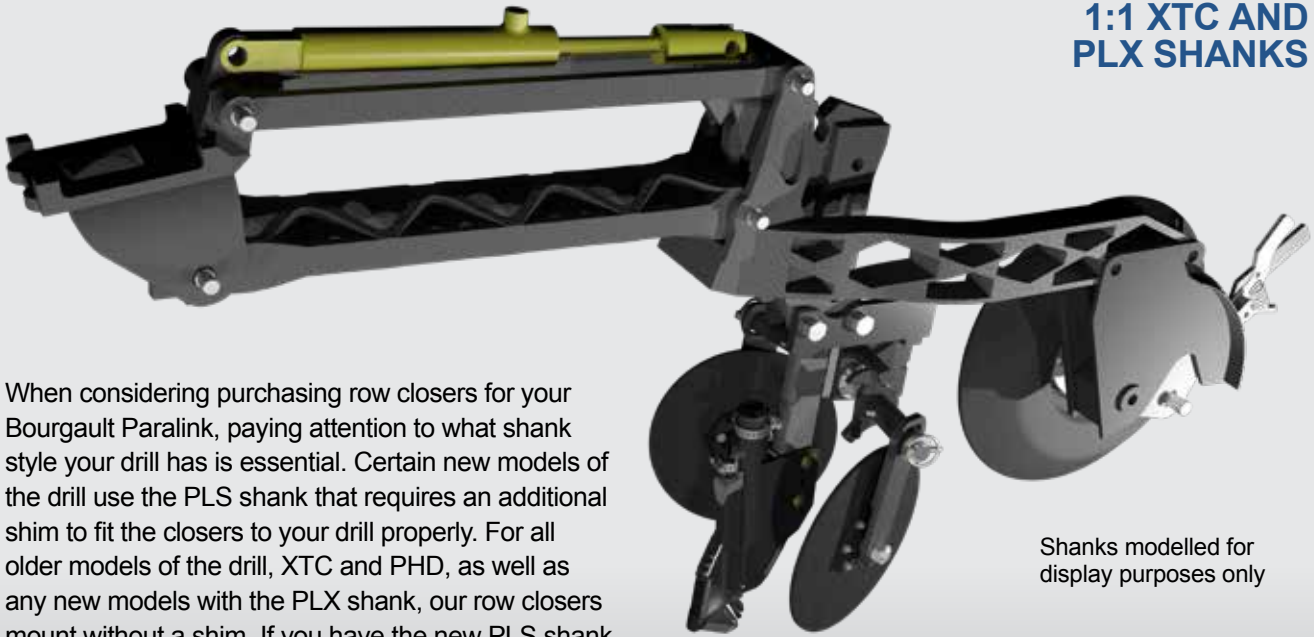
Jonah is running Atom-Jet's 3" paired row openers and row closers for Bourgault Paralink

*In our first season, we (along with Atom-Jet) noticed that the field finish was rough, and there was quite a bit of soil throw. This limited our speed to avoid stepping and made turning on the headlands quite rough. Atom-Jet designed and brought out a small batch of row closers to solve the problem; after two years of testing and adjusting, we bought a full set for the drill. Field finish has drastically improved, and our travel speeds have gone up while improving our seed placement. Without the closers, we wouldn't have been able to sow nearly as much as we were able to during this past wet spring.*

— **Jonah Genik, Gilbert Plains, MB**

**BOURGAULT PARALINK**

**1:1 XTC AND PLX SHANKS**

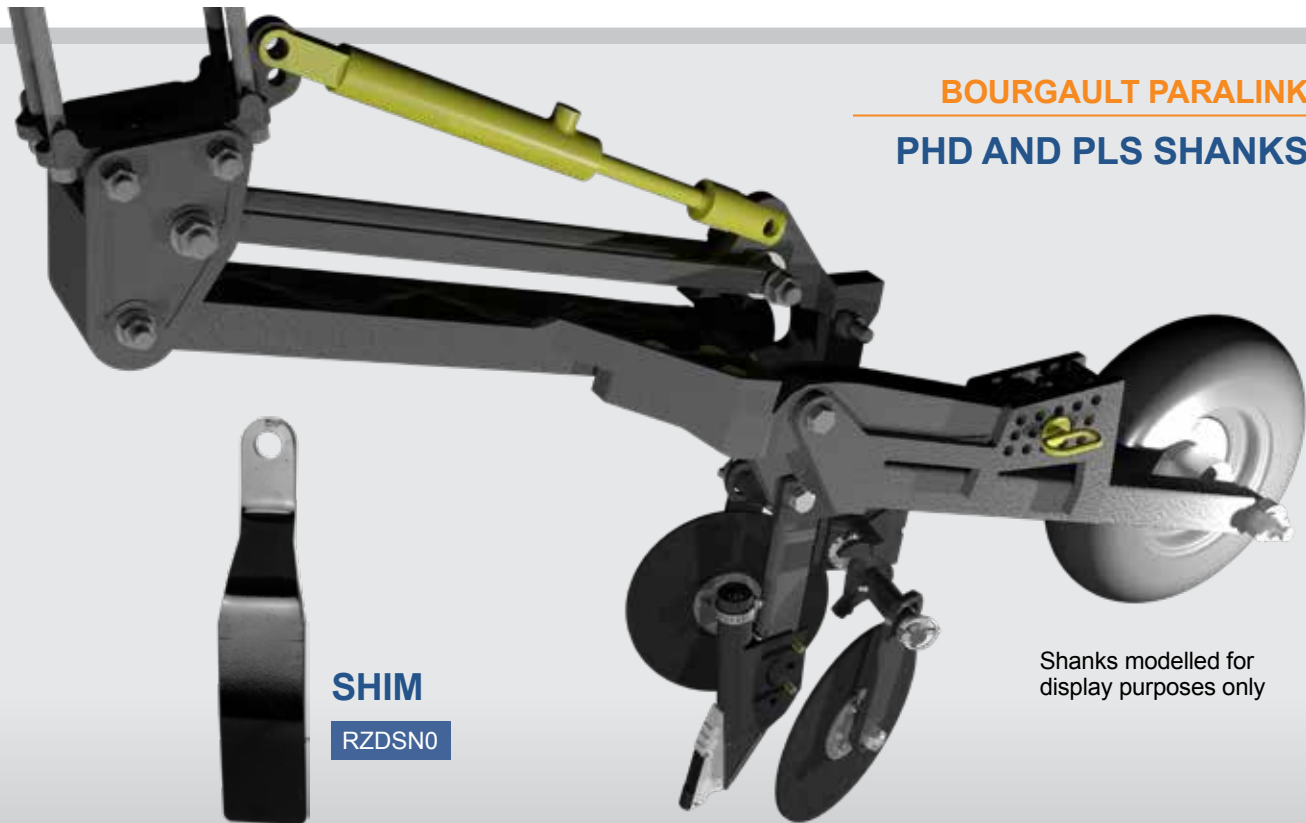


When considering purchasing row closers for your Bourgault Paralink, paying attention to what shank style your drill has is essential. Certain new models of the drill use the PLS shank that requires an additional shim to fit the closers to your drill properly. For all older models of the drill, XTC and PHD, as well as any new models with the PLX shank, our row closers mount without a shim. If you have the new PLS shank model, let our Territory Manager know and they will have the mounting shim added to your order.

Shanks modelled for display purposes only

**BOURGAULT PARALINK**

**PHD AND PLS SHANKS**



**SHIM**

**RZDSN0**

Shanks modelled for display purposes only



## ROW CLOSERS PERFORMANCE

Producers approached Atom-Jet with concerns about soil-stepping and field finish on their independent shank drills. Throughout the past three years of prototype design and testing, these two key problems were solved and led to the added benefit of producers being able to operate their drills at higher ground speeds without sacrificing field finish.

- Spring-tensioned arms keep discs running along the soil surface.
- Can be pinned up for unsuitable conditions.
- Angled discs catch soil from openers and direct it back into the furrow ahead of the packer tire.
- By capturing the soil flow and keeping it within the same row, stepping is eliminated and field finish is significantly improved.



- A customer west of Starbuck, MB, has gone from seeding at 4 mph and not being happy with his field finish, to being able to seed at over 6 mph and leaving a nice smooth field.
- A customer at Oak Bluff, MB, bought his drill new with Atom-Jet row closers added on and has been seeding at 6.3-6.5 mph.
- A customer north of Gilbert Plains, MB, was able to go 1 mph faster in cereals and 0.5 mph faster in canola, while significantly improving the field finish across his entire farm.



Rows marked with ↓ have closers pinned up to show original field finish.

## ROW CLOSERS PERFORMANCE

To see our Row Closers perform in the field, check out the videos using the links below.



**ROW CLOSERS  
IN ACTION**  
youtu.be/  
n8tWf7WQSlc



**ROW CLOSERS  
IN ACTION**  
youtu.be/  
o0KoNBipWyA



*My dad always said, "If you don't seed properly there's nothing you can do after that's going to make a crop." I farm in the Starbuck area with my brother and my nephew. We farm approximately 9,000 acres. We do corn, soybeans, oats, canola, and other crops as well. I learned about Atom-Jet Row Closers two years ago. Jason McKerchar [Atom-Jet's Territory Rep. for Manitoba and Ontario] asked me if I would test them and they did an excellent job. The row closers benefit emergence because everything comes up even; our seed depth is almost perfect now. They just put the soil back ahead of the packer wheel, and do an excellent job. I was down to 4 mph and wasn't happy with the field finish at that speed, and now with the row closers I'm up over 6 mph. I went from 28 acres per hour, up to 45 acres per hour, and I'm doing a better job. The row closers are a great investment: if you think about a 4,000-acre farm, you're putting around a million dollars into the ground. It's a small price to pay for a better seeding finish. I would recommend these row closers. I would not even own a hoe drill anymore without a set of these on. — **David Masse, Starbuck, MB***



David is running his row closers with single shoot openers on his Bourgault Paralink



# OPENERS FOR CNH FLEX HOE

Atom-Jet openers perform well with the patented true parallel link row unit on the New Holland P2070 and CIH 800. The design angle of the opener works in relation to the soil surface providing a consistent seed depth and faster, uniform crop emergence. The narrow profile of Atom-Jet openers results in smoother field finish and superior trash clearance. The carbide-protected opener improves the life of the opener in all conditions. The opener is an excellent choice for these CNH drills.

- Same-plane technology improves disturbance with accurate seed placement
- Designed not to plug in different soil conditions
- Opener selection to meet all needs – Single & Double shoot / Liquid, Granular & NH3 fertilizers applications
- Improved opener performance with significant cost savings



**CNH FLEX HOE**

**SIDE BAND GRANULAR**

**G GRANULAR**

3/4"	Left	CBGAA0
	Right	CBGAB0
1"	Left	CBGCA0
	Right	CGBCB0



ALL MOUNTING HARDWARE INCLUDED

CNH FLEX HOE

SINGLE SHOOT

G GRANULAR

1/2"	CBAS00
3/4"	CBAA00
1"	CBAC00



CNH FLEX HOE

HIGH-RATE SIDE BAND

G GRANULAR

3/4"	Left	CBGAX0
	Right	CBGAY0
1"	Left	CBGCX0
	Right	CBGCY0



**i**  
SEE PAGE 6  
FOR MORE  
INFO

CNH FLEX HOE

SIDE BAND LIQUID .250

L LIQUID

3/4"	Left	CBFAA0
	Right	CBFAB0
1"	Left	CBFCA0
	Right	CBFCB0



CNH FLEX HOE

HIGH-RATE SIDE BAND LIQUID

L LIQUID

1/4" Tube	Left	CBFTF2
	Right	CBFTG2
3/8" Tube	Left	CBFTF3
	Right	CBFTG3



CNH FLEX HOE

PAIRED ROW

G GRANULAR

L LIQUID

3"	Liquid	CBDTDM
	Granular	CBDTD0
4"	Liquid	CBETEM
	Granular	CBETE0



CNH FLEX HOE

TWIN BAND

G GRANULAR

L LIQUID

N NH3

Left	CBHTF0
Right	CBHTG0



**i**  
SEE PAGE 8  
FOR MORE  
INFO



# OPENERS FOR CONCORD EDGE ON

Atom-Jet Edge On openers that fit your Concord are ideal for every condition of soil, including gumbo. Our non-plugging technology has been a benefit to farmers running this drill. Atom-Jet openers are compatible with row closers with the use of a shank extension and are an excellent fit with the Concord drill.

- Front delivery – placing the seed directly behind the point giving accurate seed placement
- Non-plugging in all types of different soils
- Smooth vertical design allowing trash to clear
- Carbide protection on all high wear areas

*For Concord air drills that use a C-Shank instead of an Edge-On, use the part numbers found in the C-Shank section.*



*We bought our Concord 4010 in 2007 with Atom-Jet 3" Spread openers on it and are still running the same set today. The openers perform consistently in both wet and dry conditions, leaving a nice even seedbed. With the spread tip and the generally moist soil in the Red River Valley, we're able to put down a full rate of fertilizer along with the seed and have enough variance across the furrow that we don't see any seed burn. The durability on these openers has been fantastic. We've got 18 seasons on them so far and they still have lots of life left. — Brian Murray, Snowy Owl Farms, Sanford, MB*



ALL MOUNTING HARDWARE INCLUDED

CONCORD  
EDGE ON

SINGLE  
SHOOT

G GRANULAR

3/4"	CHAA00
1"	CHAC00



CONCORD  
EDGE ON

SINGLE  
SHOOT  
SPREAD

G GRANULAR

3"	CHBTD0
4"	CHCTE0



CONCORD  
EDGE ON

SIDE BAND  
GRANULAR

G GRANULAR

3/4"	Left	CHGAA0
	Right	CHGAB0
1"	Left	CHGCA0
	Right	CHGCB0



CONCORD  
EDGE ON

SIDE BAND  
LIQUID .250

L LIQUID

3/4"	Left	CHFAA0
	Right	CHFAB0
1"	Left	CHFCA0
	Right	CHFCE0



CONCORD  
EDGE ON

HIGH-RATE  
SIDE BAND  
LIQUID

L LIQUID

1/4" Tube	Left	CHFTF2
	Right	CHFTG2
3/8" Tube	Left	CHFTF3
	Right	CHFTG3



CONCORD  
EDGE ON

PAIRED ROW

G GRANULAR

L LIQUID

3"	Liquid	CHDTDM
	Granular	CHDTD0
4"	Liquid	CHETEM
	Granular	CHETE0





# OPENERS FOR MORRIS MAXIM

Atom-Jet openers are the optimal match for Morris Maxims I and II. The land following ability of the Maxim drill with the benefit of a flexible frame provides seeding accuracy and dependability with locked-in depth control. The use of Atom-Jet openers will maximize seed-to-soil contact based on packer width and shank spacing options.

- Front delivery – placing the seed directly behind the point giving accurate seed placement
- Smooth vertical design allowing trash to clear
- Reliable, rugged opener with all-steel construction
- Designed to allow for control of different seeding depths

*For Morris Maxim drills that use a C-Shank instead of an Edge-On, order using the part numbers found in the C-Shank section.*



**MORRIS MAXIM**

**HIGH-RATE SIDE BAND**

**i**

SEE PAGE 6  
FOR MORE  
INFO

**G GRANULAR**

<b>3/4"</b>	Left	CDGAX0
	Right	CDGAY0
<b>1"</b>	Left	CDGCX0
	Right	CDGKY0

ALL MOUNTING HARDWARE INCLUDED

MORRIS MAXIM

SINGLE SHOOT



G GRANULAR

3/4" CDAA00

1" CDAC00

MORRIS MAXIM

SINGLE SHOOT SPREAD



G GRANULAR

3" CDBTD0

4" CDCTE0

MORRIS MAXIM

SIDE BAND GRANULAR



G GRANULAR

3/4" Left CDGAA0

Right CDGAB0

1" Left CDGCA0

Right CDGCB0

MORRIS MAXIM

SIDE BAND LIQUID .250



L LIQUID

3/4" Left CDFAA0

Right CDFAB0

1" Left CDFCA0

Right CDFCB0

MORRIS MAXIM

PAIRED ROW



G GRANULAR

L LIQUID

3" Liquid CDDTDM

Granular CDDTD0

4" Liquid CDETEM

Granular CDETE0

MORRIS MAXIM

TWIN BAND



G GRANULAR

L LIQUID

N NH3

Left CDHTF0

Right CDHTG0



SEE PAGE 8 FOR MORE INFO



# OPENERS FOR CASE IH 700 / NH P2060

Whether it is for your CIH 700 or NH P2060, Atom-Jet has an opener that will fit your drill. The narrow profile of Atom-Jet openers results in smoother field finish, minimal draft, and superior trash clearance. The carbide-protected opener improves the life of the opener in all conditions. The openers are compatible with row closers by using a shank extension making them a superior choice for these drills.

- Seed is placed directly behind the point – Front Delivery – ensuring accurate seed placement
- The vertical design allows for excellent trash clearance
- Design of the low profile opener results in less steel being pulled in the field, reducing draft
- Same-plane seed placement ensures seed is placed on a firm seed bed, promoting germination

*For Case IH 700 or New Holland P2060 air drills that use a C-Shank instead of an Edge-On, use the part numbers found in the C-Shank section.*



**CASE IH 700 / NH P2060**

**EDGE ON TWIN BAND**

**G GRANULAR**

**L LIQUID**

**N NH3**

Left CHHTF0

Right CHHTG0



SEE PAGE 8 FOR MORE INFO



ALL MOUNTING HARDWARE INCLUDED

CASE IH 700 / NH P2060

EDGE ON SINGLE SHOOT

G GRANULAR

3/4"	CHAA00
1"	CHAC00



CASE IH 700 / NH P2060

EDGE ON SINGLE SHOOT SPREAD

G GRANULAR

3"	CHBTD0
4"	CHCTE0



CASE IH 700 / NH P2060

EDGE ON SIDE BAND GRANULAR

G GRANULAR

3/4"	Left	CHGAA0
	Right	CHGAB0
1"	Left	CHGCA0
	Right	CHGCB0



CASE IH 700 / NH P2060

EDGE ON SIDE BAND LIQUID .250

L LIQUID

3/4"	Left	CHFAA0
	Right	CHFAB0
1"	Left	CHFCA0
	Right	CHFCE0



CASE IH 700 / NH P2060

HIGH-RATE SIDE BAND LIQUID

L LIQUID

1/4" Tube	Left	CHFTF2
	Right	CHFTG2
3/8" Tube	Left	CHFTF3
	Right	CHFTG3



CASE IH 700 / NH P2060

EDGE ON PAIRED ROW

G GRANULAR

L LIQUID

3"	Liquid	CHDTDM
	Granular	CHDTD0
4"	Liquid	CHETEM
	Granular	CHETE0





# OPENERS FOR VERSATILE

Atom-Jet has been involved in the development of openers for the ML series since the inception of the drill. The design has been improved over the years now using Atom-Jet's vertical point to work in conjunction with the parallel linkage and independent shanks of the drill providing superior seed placement. The opener minimizes trash flow and allows the opener to run quieter in the soil working with the mechanical packing pressure. This combination makes Atom-Jet openers an excellent choice for the ML series.

- High wear areas carbide protected for extended life
- Non-plugging in different soil types
- Openers for all fertilizer and seeding applications
- Same plane placement ensures accurate seed placement



## VERSATILE

### HIGH-RATE SIDE BAND LIQUID

#### L LIQUID

1/4" Tube	Left	CVFTF2
	Right	CVFTG2
3/8" Tube	Left	CVFTF3
	Right	CVFTG3





ALL MOUNTING HARDWARE INCLUDED

VERSATILE

SINGLE SHOOT

G GRANULAR

3/4"	CVAA00
1"	CVAC00



VERSATILE

SINGLE SHOOT SPREAD

G GRANULAR

3"	CVBTD0
4"	CVCTE0



VERSATILE

SIDE BAND GRANULAR

G GRANULAR

3/4"	Left	CVGAA0
	Right	CVGAB0
1"	Left	CVGCA0
	Right	CVGCB0



VERSATILE

SIDE BAND LIQUID

L LIQUID

3/4"	Left	CVFAA0
	Right	CVFAB0
1"	Left	CVFCA0
	Right	CVFCB0



VERSATILE

PAIRED ROW

G GRANULAR

L LIQUID

3"	Liquid	CVDTDM1
	Granular	CVDTD01
4"	Liquid	CVETEM1
	Granular	CVETE01



VERSATILE

TWIN BAND

G GRANULAR

L LIQUID

N NH3

Left	CVHTF0
Right	CVHTG0



**i**  
SEE PAGE 8  
FOR MORE  
INFO



# OPENERS FOR HOE DRILLS

Our hoe drill openers provide a quality and cost-effective solution for growers who still utilize Hoe Drill seeding units. Carbides added to the point provide superior opener life. Vertical design creates a consistent seedbed allowing for even germination and better emergence. With an optional liquid configuration throughout the product range, you can depend on Atom-Jet.

- Double carbide point
- Excellent seed placement
- Plug-free points
- Excellent ground penetration
- Maintainable / repairable
- All configurations available for liquid application



**CASE IH  
7200/8500**

**SIDE  
BAND  
LIQUID**



**L LIQUID**

Left	ECFAA0
Right	ECFAB0

ALL MOUNTING HARDWARE INCLUDED

CASE IH  
7200/8500

SINGLE  
SHOOT

G GRANULAR

ECAB00



MORRIS  
MH 310/3100

SINGLE  
SHOOT

G GRANULAR

ELAA00



JOHN DEERE  
9300/9400

SIDE BAND  
LIQUID

L LIQUID

Left EJFJA0

Right EJFJB0



VERSATILE /  
NOBLE

SINGLE  
SHOOT

G GRANULAR

EPAB00



MORRIS M11  
SEED RITE

SINGLE  
SHOOT

G GRANULAR

3/4" EMAB00

1" EMAC00



JOHN DEERE  
9300/9400

SINGLE  
SHOOT

G GRANULAR

3/4" EJAJ00

1" EJAK00





# PRECISION DISC SCRAPERS FOR CASE IH 500 / NH P2080

The Case IH PD500 and New Holland P2080 Precision Disc drills offer a true parallel linkage for superior seeding depth management. Whether it's the Single or Double Shoot Scrapers, Atom-Jet's new line complements this system by providing a long-lasting, non-plugging scraper. Our Double Shoot Scrapers add the ability to apply a full rate of fertilizer along with the seed in a single pass.

- Trash shield is incorporated into the scraper, saving costs
- Strategically placed carbides protect all high wear surfaces
- Adjustable position to match disc wear
- Shorter scraper profile stays tight to the disc preventing plugging



*The first Atom-Jet scrapers we had on a Case SDX drill a number of years ago. This spring we outfitted our four Case PD500 drills with Atom-Jet single shoot scrapers. We're seeding about 2" to 2½" from the surface but yet our seed is only an inch into the ground at the bottom of that furrow. Once you sweep that top inch of dry dirt away it's nice moist ground you're getting into. The scrapers are durable; I would say they'd outlast 3:1 to an OEM scraper. I would recommend Atom-Jet to anybody with the experience I've had. In fact, I would recommend buying nothing but Atom-Jet for this drill.*  
**— Roger Bendickson, Garrison, ND**



ALL MOUNTING HARDWARE INCLUDED

CASE IH 500 / NH P2080  
PRECISION DISC SCRAPER

SINGLE SHOOT  
SCRAPER

**i**  
SEE PAGE 11  
FOR MORE  
INFO

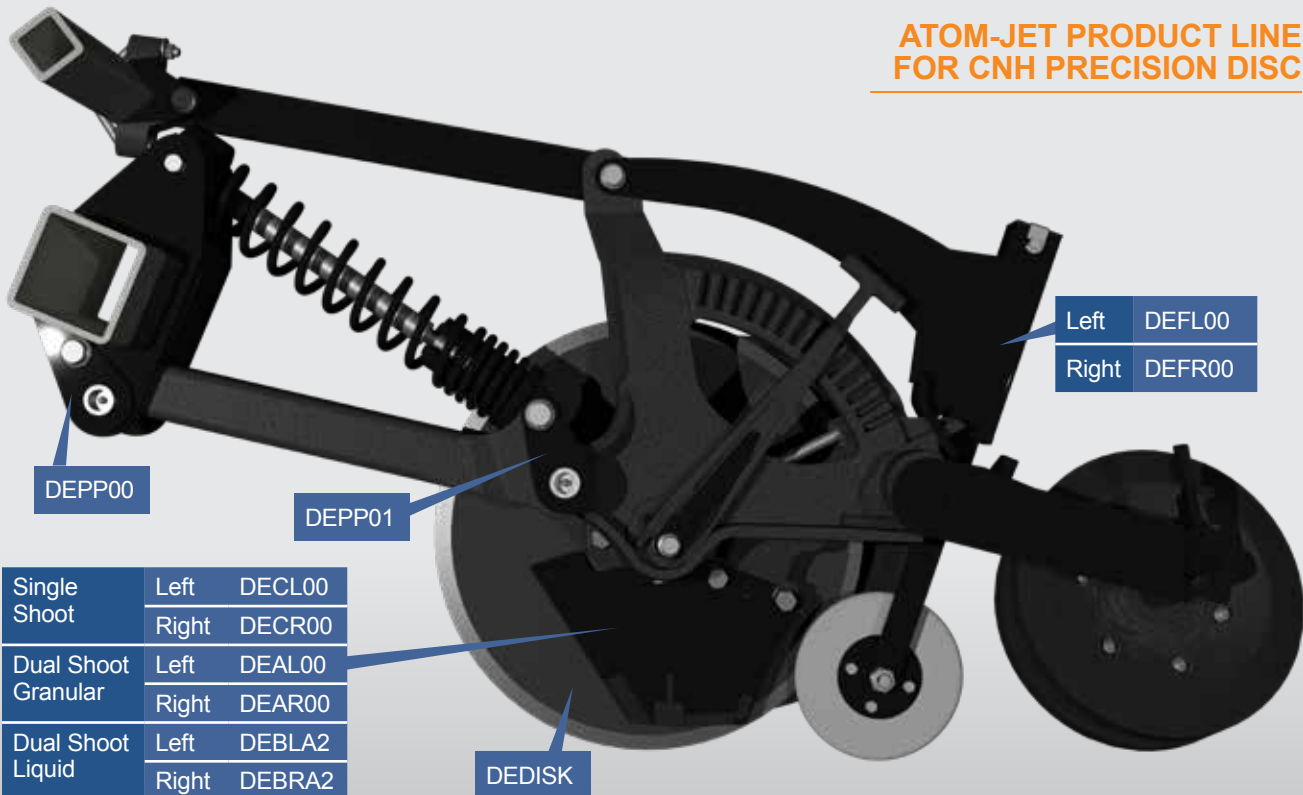


INSTALLATION  
[youtu.be/  
kLKRmfZBGh0](https://youtu.be/kLKRmfZBGh0)

**G GRANULAR**

Left	DECL00
Right	DECR00

ATOM-JET PRODUCT LINE  
FOR CNH PRECISION DISC



Left	DEFL00
Right	DEFR00

DEPP00

DEPP01

DEDISK

Single Shoot	Left	DECL00
	Right	DECR00
Dual Shoot Granular	Left	DEAL00
	Right	DEAR00
Dual Shoot Liquid	Left	DEBLA2
	Right	DEBRA2

CASE IH 500 / NH P2080 PRECISION DISC SCRAPER

DUAL SHOOT GRANULAR SCRAPER



**G GRANULAR**

Left	DEAL00
Right	DEAR00



**INSTALLATION**  
[youtu.be/kLKRmfZBGh0](https://youtu.be/kLKRmfZBGh0)

**PATENTED UHMW INSERT**

Our dual shoot granular and liquid scrapers have a patented (US Patent #10,368,472) UHMW insert. This insert is used exclusively on our double shoot scrapers which have a wing for creating the second product band. The UHMW helps to mitigate the side loading created by the wing, leading to an extended product life.

- Low friction surface lowers turning resistance causing smoother disc operation.
- Insert prevents mud and trash from building up inside the scraper.





**CASE IH 500 / NH P2080 PRECISION DISC SCRAPER**

**DUAL SHOOT LIQUID SCRAPER**



**L LIQUID**

1/4" Tube	Left	DEBLA2
	Right	DEBRA2
3/8" Tube	Left	DEBLA3
	Right	DEBRA3



**INSTALLATION**  
[youtu.be/kLKRmfZBGh0](https://youtu.be/kLKRmfZBGh0)



*We farm cereals and oil seeds. The soil type here is a sandy loam soil mainly, with a rolling topography, and fairly dry. This is our second year with the Atom-Jet scrapers. We made the switch to have side-banding capabilities for liquid fertilizer. The scrapers have been excellent. They are great at clearing trash, and we've had no plugging problems so far despite cutting through many different stubble conditions. Some of the benefits of using the Atom-Jet scrapers are the ability to side band our liquid fertilizer, the durability and longevity of the scraper, and supporting a local business. — **Dustin Williams, Souris, MB***

CASE IH 500 / NH P2080  
PRECISION DISC SCRAPER

FIRMING WHEEL



Left	DEFL00
Right	DEFR00

Atom-Jet Firming Wheels are only compatible with Case IH PD500 and New Holland P2080 series disc drills.

CASE IH 500 / NH P2080  
PRECISION DISC SCRAPER

REPLACEMENT  
UHMW WHEEL



DEZFWH

FIRMING WHEEL

After years of experience working with the Case PD500 and New Holland P2080 series disc drills, customers running our single and double shoot scrapers brought to our attention the need for a firming wheel similar to what other disc drills on the market use. To solve this problem, Atom-Jet has developed a firming wheel attachment that bolts directly onto the existing Precision Disc shanks with no modifications.

- UHMW wheel ensures no soil buildup.
- Spring pressure gently presses seed into the seedbed.
- Fits directly behind the scraper ahead of the packer tire.



**CASE IH 500 / NH P2080  
PRECISION DISC SCRAPER**

**MAIN HINGE PIN**



To replace CNH Part:  
47359245

DEPP00

**CASE IH 500 / NH P2080  
PRECISION DISC SCRAPER**

**PARALLEL LINKAGE PIN**



To replace CNH Part:  
84605521

DEPP01

**CASE IH 500 / NH P2080  
PRECISION DISC SCRAPER**

**OFFSET SHANK SHIM**



Left DEZF11L

Right DEZF11R

**INGERSOLL**



**DISC**

Atom-Jet is pleased to carry high-quality, North American made Ingersoll Discs for Case PD500 and NH P2080 disc drills.



ZT-DEDISK

**FIRMING WHEEL OFFSETS**

For Firming Wheel installation, certain drill width and shank spacing combinations of the CNH Precision Disc drill require an offset shim to be added to align your firming wheel properly. Please follow the chart to determine how many shims will be required for your specific setup.

Drill Width (ft)	Spacing (in)	Total # of Shanks	Offsets Required	
			Left DEFL00	Right DEFR00
30	7.5	48	1	1
	10	36	0	0
	15	24	1	0
40	7.5	64	1	1
	10	48	1	1
	15	32	1	0
50	7.5	80	1	2
	10	60	3	2
60	7.5	96	3	2
	10	72	2	0



# SCRAPERS FOR CASE IH SDX SYSTEMS

When producers needed to reshape their drills into a one pass double-shoot system, they came to Atom-Jet to develop a solution. Faced with a challenge, the R&D team, working together with farmers, were able to provide a system to allow growers to double shoot with the SDX drill. The scrapers have all the hard-wearing benefits Atom-Jet is known for, with the ability to seed in one pass.

- Carbide protection
- Increased scraper life
- Reduced time changing scrapers
- Same size as OEM scraper



## CASE IH SDX SYSTEM

### CARBIDE SCRAPER

**G GRANULAR**

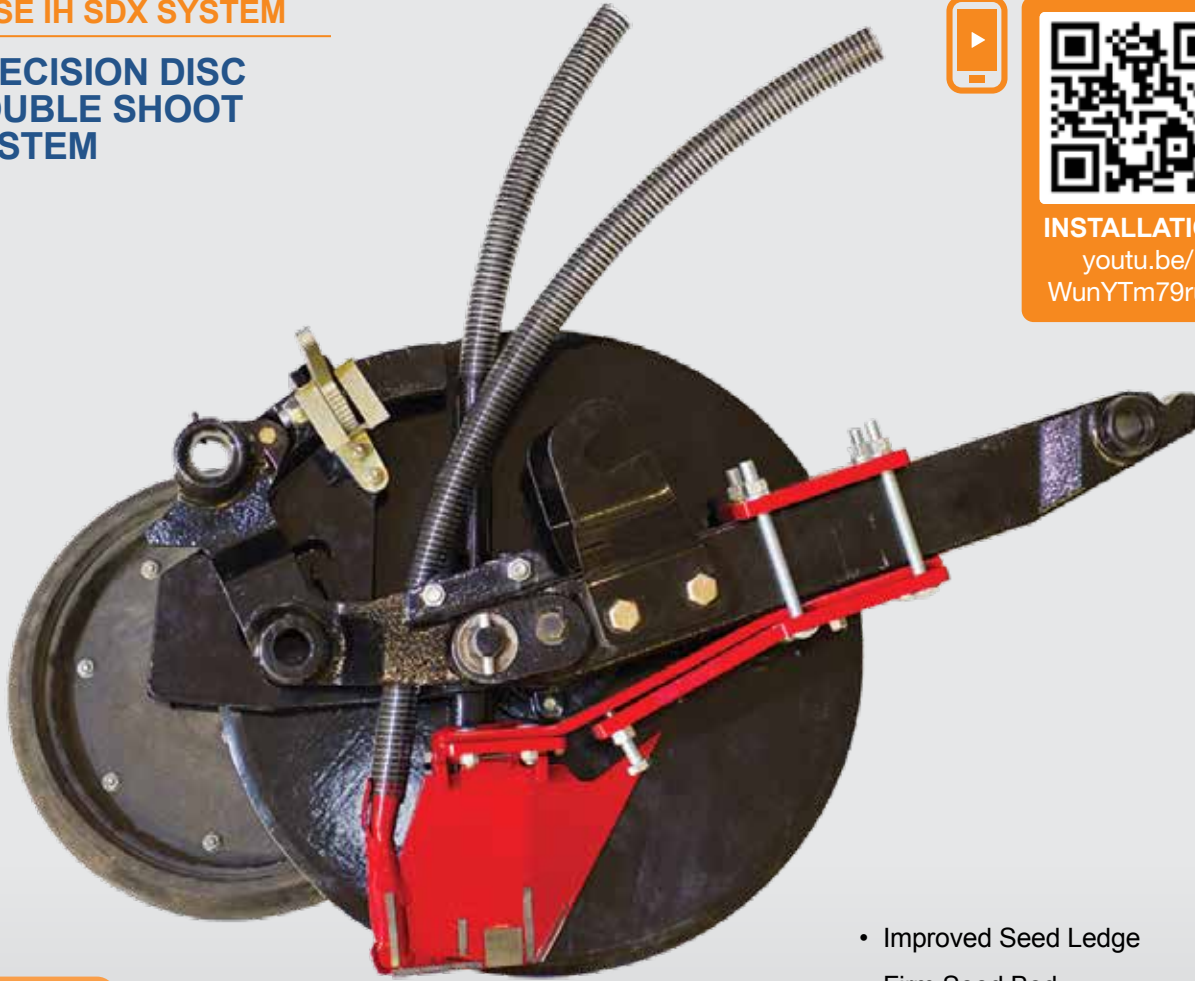
Left DACL00

Right DACR00



CASE IH SDX SYSTEM

PRECISION DISC  
DOUBLE SHOOT  
SYSTEM



INSTALLATION  
youtu.be/  
WunYTm79ruQ

**G GRANULAR**

**L LIQUID**

Complete System

Liquid	Left	DABL00
	Right	DABR00
Granular	Left	DAAL00
	Right	DAAR00

Replacement Scrapers

Liquid	Left	DAZBACL
	Right	DAZBACR
Granular	Left	DADL00
	Right	DADR00

- Improved Seed Ledge
- Firm Seed Bed
- Improved Seed Placement
- Improved Germination
- Save Fuel and Time by Making Less Passes
- Granular and Liquid Options
- Carbide-Protected Scraper

*I had people coming from miles away to see the emergence I got with my Atom-Jet double shoot SDX scraper. This year in adverse conditions I had the best catch I have ever had on my canola. They performed better than we could have ever imagined in heavy trash and the field finish was like nothing I have ever seen. I seeded my peas and lentils and didn't need to roll the field! In all my crops the seed and fertilizer looked hand placed! I got more done and did a better job with my 40' SDX at 6.5 mph than my neighbors did at 4.5 mph with a 60' drill. Putting Atom-Jets on our SDX was the best decision we have made on our farm in a long time. — Rick Zesko, Rycroft, AB*



# OPENERS FOR JOHN DEERE 1870 CONSERVAPAK

The John Deere 1870 ConservaPak drill was developed to provide consistent depth control for enhanced seed and fertilizer placement. Individual hydraulic settings were designed to allow independent downforce for a more uniform depth across the width of the frame. Atom-Jet developed the new 1/2" fertilizer knife based on farmers requesting a longer lasting knife that can run at the required depths.

- The 1/2" narrow banding profile maintains the low disturbance and superior furrow closing expected from a 1/2" knife
- Tungsten carbide protected point made of abrasion resistant steel plate



*I farm about 1,300 acres, and do custom work for up to 5,000 acres. I looked at all the competitors and Atom-Jet was the one that I liked. They made the ConservaPak Fertilizer Knife and I was one of the first ones to get it and I'm 100% delighted with it. It's done everything that I thought it would do, and my customers that I seed for are delighted with how the seed is emerging too. The build quality is really good. They've got a lot of carbide on it and wear very little. They are more open at the back so they don't plug. I would highly recommend Atom-Jet openers to anyone. — **John Wilson, Redvers, SK***



ALL MOUNTING HARDWARE INCLUDED

JOHN DEERE 1870  
CONSERVAPAK

1/2" FERTILIZER  
KNIFE GRANULAR



G GRANULAR

CPAW00

JOHN DEERE 1870  
CONSERVAPAK

1/2" FERTILIZER  
KNIFE GRANULAR  
& NH3



G GRANULAR

N NH3

1/4" Tube	CPAW12
3/8" Tube	CPAW13
1/2" Tube	CPAW14

JOHN DEERE 1870  
CONSERVAPAK

1/2" FERTILIZER  
KNIFE LIQUID



L LIQUID

1/4" Tube	CPAW32
3/8" Tube	CPAW33
1/2" Tube	CPAW34



*My son, Tyson, and I farm about 4,000 acres of oilseeds, cereals, and pulse crops. Seeding season is the most important because by starting the crop off in a good condition it sets us up for a good year. We went with the Atom-Jet paired row seed boot and liquid and granular fertilizer boot on our ConservaPak because we had their products on our previous drills for a number of years and we knew they were a durable product. I have about 5,000 acres on these openers and you can still see the paint on the seed boots.*

*Atom-Jet openers have made our farm more successful due to the fact that they place the seed exactly where it's supposed to be. The U-shape on the underside of the paired row closes the fertilizer trench so we don't have to worry about the seeds rolling down into it. The openers have left us with nice even emergence across the field. I would definitely recommend Atom-Jet openers. They are a great fit with the ConservaPak drill. — Greg and Tyson Kistner, Bethune, SK*

**JOHN DEERE 1870  
CONSERVAPAK**

**3" PAIRED ROW  
SEED BOOT**



3" CPD000

**JOHN DEERE 1870  
CONSERVAPAK**

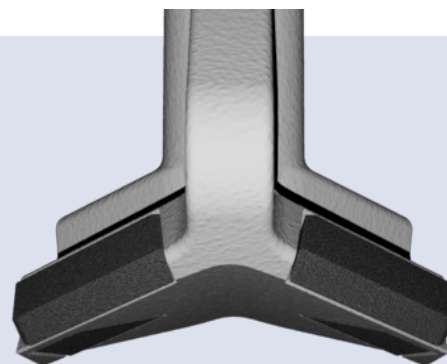
**4" PAIRED ROW  
SEED BOOT**



4" CPE000

**PAIRED ROW CUP**

Our Paired Row cup is specially designed with a curved underside to help close the fertilizer trench to prevent nitrogen burn. The added carbide wear tiles on the underside of the cup protect against the additional pressure of forcing the furrow closed. With our standard carbide protection on the leading edge of the wings, and a high chrome cast material, this opener will outlast the OEM.



**JOHN DEERE 1870  
CONSERVAPAK**

**SINGLE SHOOT  
SEED BOOT**



CPAA00

**JOHN DEERE 1870  
CONSERVAPAK**

**CARBIDE MUD  
SCRAPER**



In addition to our opener and fertilizer knife replacements for the ConservaPak air drill, we have developed a carbide-protected mud scraper add-on to keep your packer tires clean.

- Long lasting carbide protection
- Easy installation
- OEM replacement

CPMS00



*I farm just under 7,000 acres with my son, Jordan, around Odessa, SK. Farming in this area can be challenging as there can be very little moisture at times. The biggest challenge is to get our crops in early so we don't have to worry about frost in the fall.*

*We use an 1870 ConservaPak. We only run one drill and we run it hard to get everything seeded. We started using Atom-Jet openers two years ago with the seed boots and added the fertilizer knives this year. I really like the seed placement out of the seed boot; it pushes the seed into the side of the furrow right into moisture. The fertilizer boots keep the fertilizer away from the seed so we don't run into seed burn.*

*Atom-Jet openers are very durable. We've had the seed openers on for two years now and don't have any wear on them. The openers make our farm more successful because of the placement of the seed. When we watch our crop come up we are amazed at how accurate the seed placement is; the whole row comes up even on every field no matter what we're seeding.*

**— Shawn Muhr, Odessa, SK**



# NH3 FERTILIZER KNIVES

Our NH3 fertilizer knives solve freezing issues by utilizing a nylon insert to keep the blade insulated from the NH3. This maintains a true 3/4" knife, allowing for excellent sealing, minimal disturbance, and low draft. Inspired design means all NH3 blades can be adjusted up to 1" for wheel tracks.

- Universal fit for most front mount and side mount applications
- Available with non-freeze technology
- Carbide tipped for extended wear
- 1/2" thick high carbon shank
- Fits Salford, John Blue, DMI, Blue Jet, Tormaster, and most others
- Side mount knives available in 13", 15", or 17"
- Available with .250", .375", or .500" tube



*The Atom-Jet NH3 non-freeze knives wear extremely well in heavy, stony soils. On my original set of knives I have approximately 15,000 acres with lots of acres left on them. I have never had any problem with freezing with the non-freeze knife. I like how easy these knives are to change—just take out the bolt and the blade comes out if the bolt is tightened properly.*

– **Malcolm Murray, Neepawa, MB**

ALL MOUNTING HARDWARE INCLUDED

NH3 FERTILIZER KNIFE

FRONT MOUNT NON-FREEZE



- 3/8" KBBN3C
- 1/2" KBBN4C

NH3 FERTILIZER KNIFE

FRONT MOUNT REGULAR



- 3/8" KBBR3C
- 1/2" KBBR4C

NH3 FERTILIZER KNIFE

C-SHANK SINGLE SHOOT WITH NH3 INSERT



- 1" CCAC00XU1

NH3 FERTILIZER KNIFE

INSULATED NH3 INSERT



- CZMFN4

**NH3 FERTILIZER KNIFE**

**SIDE MOUNT  
NON-FREEZE**



13"	KA3N40
15"	KA5N40
17"	KA7N40

**NH3 FERTILIZER KNIFE**

**SIDE MOUNT  
REGULAR**



13"	KA3R40
15"	KA5R40
17"	KA7R40

**NH3 FERTILIZER KNIFE**

**KNOCK-ON  
NON-FREEZE**



Nichol	KBBN40XK2
BOR 200	KBBN40XK3
BOR 400	KBBN40XK4

**NH3 FERTILIZER  
KNIFE**

**FRONT MOUNT  
NON-FREEZE –  
REPLACEMENT  
INSULATED  
DELIVERY  
PLASTIC**

WITH ADDED VAPOUR LINE



1/2"	KZMB4V
------	--------

**NH3 FERTILIZER  
KNIFE**

**FRONT MOUNT  
NON-FREEZE –  
REPLACEMENT  
INSULATED  
DELIVERY  
PLASTIC**



3/8"	KZMB30
1/2"	KZMB40



**NH3 FERTILIZER KNIFE**

**FRONT MOUNT REGULAR – REPLACEMENT BLADE**



3/8" KBBR30

1/2" KBBR40

**NH3 FERTILIZER KNIFE**

**FRONT MOUNT NON-FREEZE – REPLACEMENT BLADE**



3/8" KBBN30

1/2" KBBN40

**NH3 FERTILIZER KNIFE**

**FRONT MOUNT – REPLACEMENT HOLDER**



KZMBH0

**NH3 FERTILIZER KNIFE**

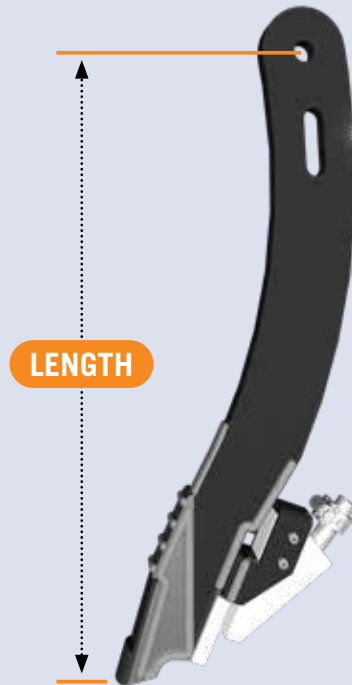
**FRONT MOUNT NON-FREEZE – ADD-ON HOSE SUPPORT BRACKET**



KZMHB0

**SIDE MOUNT KNIFE MEASUREMENTS**

To determine the length of side mount knife that your drill needs, measure the length from the center of the top bolt hole directly to the bottom of the point. Laying your existing fertilizer knives down on a table, and lining the bottom of the point with the edge of the table gives an easy way to make sure you're square and getting an accurate measurement.



# STRIP TILL KNIVES

In the changing landscape of soil conservation practices, strip tillage has shown substantial benefits in certain geographical areas and climates. With these benefits in mind, Atom-Jet is working on a line of strip tillage knives for different applications to work with your needs. With the demands on the knife, Atom-Jet is well-suited to develop a long-lasting product to meet the demands of farmers using strip till.



*I started running Atom-Jet Strip Till fertilizer knives three years ago on my 5,500 acre farm in Ulysses, Kansas. I worked with the R&D team to build a knife that allows me to put both NH<sub>3</sub> and liquid fertilizer down in a single pass with my CaseIH 5310 strip till unit. The carbide points and wings, along with the hard surface welding, give me great confidence that they will run without issues. I have had no problems with plugging or freezing up the fertilizer runs, and they allowed me to hit my target rates without concern. They also developed shields to bolt on the side of the shank to protect where the hoses slide on to the tubes so they wouldn't push back off.*

*I highly recommend this company as they are great people to work with!*  
**— Kevin Shapland (at right), Ulysses, KS**

ALL MOUNTING HARDWARE INCLUDED

**STRIP TILL KNIFE**  
**NON-FREEZE**



KSSN13

**STRIP TILL KNIFE**  
**LIQUID & NH3**



KSMR433

**STRIP TILL KNIFE**  
**LOW DISTURBANCE WINGED FRONT MOUNT FERTILIZER KNIFE**



KBWR4C

**STRIP TILL KNIFE**  
**WINGED FRONT MOUNT TILLAGE KNIFE**



KBWR3CMC



# POWER HILLER TINES

Atom-Jet's Carbide hiller tines were built to enhance the performance of your Power Hilling Machinery, no matter what model you use.

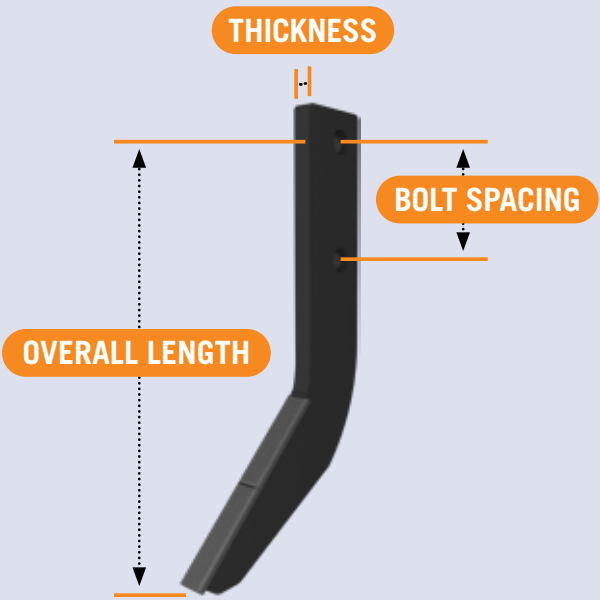
If you're looking to reduce not only your maintenance costs, but replacement as well, Atom-Jet has you covered. Our use of high-strength, abrasion-resistant steel and carbide protection ensure uniform hills and tiller tines that last up to eight times longer than others on the market.



## HILLER TINE MEASUREMENT

When ordering Power Hiller Tines, due to the numerous types of machines these can fit on, extra attention should be paid to ensure you get the tines to match your unit.

Knowing the bolt spacing, overall length, thickness, and shape of your tine will ensure you get the correct parts.



**STRUICK**

**3/8" × 8.75"**



PA1TF0

**STRUICK**

**3/8" × 13.88"**



PG1TF0

**BAUMAN**

**3/8" × 12.50"**



PC1TF0

**BASELIER**

**1/2" × 15.40"**



PB2TF0

**RUMPSTAD**

**3/8" × 10.65"**



PD1TF0

**RUMPSTAD**

**3/8" × 12.88"**



PD2TF0

# HYDRAULIC SYSTEMS CLOSED-CENTER

## FOR HIGH-DEMAND APPLICATIONS

Our Closed-Center, Load-Sensing systems match the capacity delivered by the pump to the load requirements. This allows for an increased range of flow without the headaches of overheating issues. Providing an additional 40 gpm at 3,000 psi when operating at 2,100 engine rpm, we ensure you won't be left short when you need power.

- Compatible with:
  - Air Cart Fans
  - Sprayers
  - Grain Carts
  - Active Shank Drills
- In-Cab Flow Control







## TRACTOR MODELS AVAILABLE

<b>Versatile</b>	750, 800, 825, 835, 850, 855, 875, 895, 945, 955, 975
<b>Ford/Versatile Designation 6</b>	936, 946, 956, 976 (with 855 Cummins Engine only)
<b>Case STX</b> (2001-11 model years)	375, 380, 425, 430, 450, 480, 500, 530
<b>Case Steiger</b>	380, 385, 430, 435, 480, 485, 530, 535
<b>New Holland</b> (2001-11 model years)	TJ 375, TJ 380, TJ 425, TJ 430, TJ 450, TJ 480, TJ 500, TJ 530, T9030, T9040, T9050, T9060

## OPTIONAL UPGRADES

<b>Quick Couplers</b>	¾" standard; ½" optional
<b>Heat Exchanger</b>	Radiator Mounted or Electric Fan Blown

Hydraulic Kits are available only for listed models.

## SYSTEM SPECIFICATIONS

<b>Type</b>	Closed-Center, Load-Sensing
<b>Hydraulic Flow</b>	40 gallons per minute at 2,100 engine rpm
<b>Maximum Pressure</b>	3,000 Pound Per Square Inch
<b>Control Valving</b>	Proportional Spool
<b>Control Type</b>	12 VDC Proportional Joystick
<b>Hydraulic Reservoir</b>	<b>Versatile Tractors:</b> Add-On 30 Gallon Capacity <b>All Others:</b> Existing Reservoir

Atom-Jet Hydraulic Kits are manufactured by the experts at our Glendale Industries facility, 1520 Charles Street, Brandon, MB.

# HYDRAULIC SYSTEMS **OPEN-CENTER**

## FOR BASIC APPLICATIONS

Our Open-Center hydraulic system provides an economical solution for custom designed single-motor applications that only require one set of quick couplers.

This system is complete with in-cab joystick control and can be specifically matched to your application with flow ranges of 23 and 26 gpm at 3,000 psi when working at 2,100 engine rpm.

Whether it's driving an air fan or controlling a water pump, our Open-Center applications can be designed to address a variety of needs.



*I installed an auxiliary hydraulic pump on my T9050 New Holland tractor. It was very easy to install. The instructions for installation were easy to follow and had lots of pictures to help in identifying where things were supposed to go.*

*The hydraulic pump gave me the extra hydraulic capacity to run my drill. The monitor was easy to use and had a very good display of all the functions.*

*In my opinion, this system is a very simple way to increase the hydraulic capacity of your tractor. — **Michael Knight, Knightime Farms, Decker, MB***



## TRACTOR MODELS AVAILABLE

<b>Versatile</b>	750, 800, 825, 835, 850, 855, 875, 895, 945, 955, 975 Models 750-850 Series 2 1976 and newer. Series 3 1982-84.
<b>Ford/Versatile Designation 6</b>	936, 946, 956, 976 (with 855 Cummins Engine Only)

## OPTIONAL UPGRADES

<b>Quick Couplers</b>	¾" standard; ½" optional
<b>Heat Exchanger</b>	Radiator Mounted or Electric Fan Blown
<b>Tractors With Dozer Blades</b>	Versatile Kits Can Be Supplied Without Reservoir If Tractors Are Equipped With A Dozer Blade

*Hydraulic Kits are available only for listed models.*

## SYSTEM SPECIFICATIONS

<b>Type</b>	Open-Center
<b>Hydraulic Flow</b>	23 & 26 Gallons Per Minute Configurations
<b>Maximum Pressure</b>	3,000 Pounds Per Square Inch
<b>Control Valving</b>	Proportional Spool
<b>Control Type</b>	12 VDC Proportional Joystick
<b>Hydraulic Reservoir</b>	<b>Versatile Tractors:</b> Add-On 30-Gallon Capacity <b>All Others:</b> Existing Reservoir

Atom-Jet Hydraulic Kits are manufactured by the experts at our Glendale Industries facility, 1520 Charles Street, Brandon, MB.



# PARTS & ACCESSORIES




A replacement part for non-freeze NH3 knives with a 1/2" tube. 2 roll pins included.

**KZMB40**



A replacement part for non-freeze NH3 knives with 2 x 1/2" tubes for vapour.

**KZMB4V**



The NH3 blade holder. Holder bolts onto shank; blade slides into holder.

**KZMBH0**



Bracket that holds the hose as it comes off the non-freeze blade.

**KZMHB0**



Piece of steel that welds onto NH3 knife which the UHMW fits into.

**KZMUCF**



GR8 1/2" x 2 1/2" carriage bolt, lock nut, washer.

**CZM0AA**



GR8 3/8" x 2 1/4" carriage bolt, lock nut.

**CZM0AB**



C-Shank bolt holder for John Deere.

**CZMFBH**



1/4" shim for a 54° shank.

**CZNJ00**



3/16" shim for a 47° shank.

**CZNK00**



Hose reducer. Tube spacer for 1 1/4" - 1" hose.

**CZD0TF**



Insulated NH3 insert.

**CZMFN4**



Compression Fitting for  
1/4" OD NH3 Line.  
CZM01F



Bourgault Paralink shim.  
CZNA00



C-Shank granular chute.  
Left CZFCLF  
Right CZFCRF



Morris Maxim / Bourgault  
Paralink granular chute.  
Left CZFBLF  
Right CZFBRF



Contour / CNH hoe  
granular chute.  
Left CZFALF  
Right CZFARF



C-Shank twin band chute.  
Left CZFFLF  
Right CZFFRF



Morris Maxim / Bourgault  
Paralink twin band chute.  
Left CZFELF  
Right CZFERF



Paired row splitter -  
separates seed and fertilizer.  
CZLFB0  
CZLCB0



C-Shank top.  
CZTA00



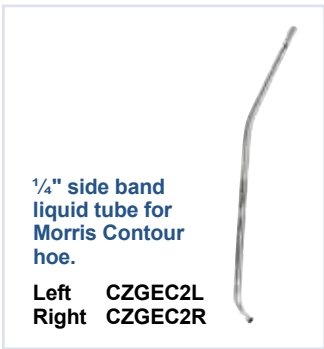
Edge On top.  
CZTB0



1/8" & 1/4"  
Max Quip  
tube.  
Twin Band  
CZG0M12  
Side Band  
CZG0N12



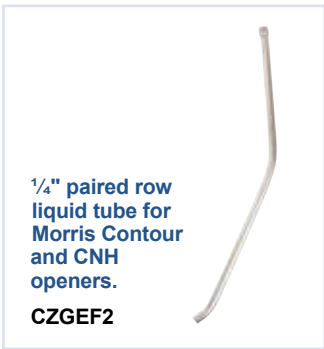
1/4" side  
band liquid  
tube for  
C-Shank /  
Edge On.  
CZGFC2



1/4" side band  
liquid tube for  
Morris Contour  
hoe.  
Left CZGEC2L  
Right CZGEC2R



1/4" paired row  
liquid tube.  
CZGFF2



1/4" paired row  
liquid tube for  
Morris Contour  
and CNH  
openers.  
CZGEF2



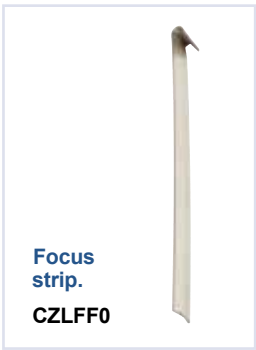
3/8" SPF tube  
for C-Shank  
openers.  
CZGFA3



Tube  
separator.  
CZLFA0



Contour hoe  
tube separator.  
CZLEAF



Focus  
strip.  
CZLFF0



Steel piece welded  
to front of opener  
to protect liquid line  
from trash.  
CZD0EF



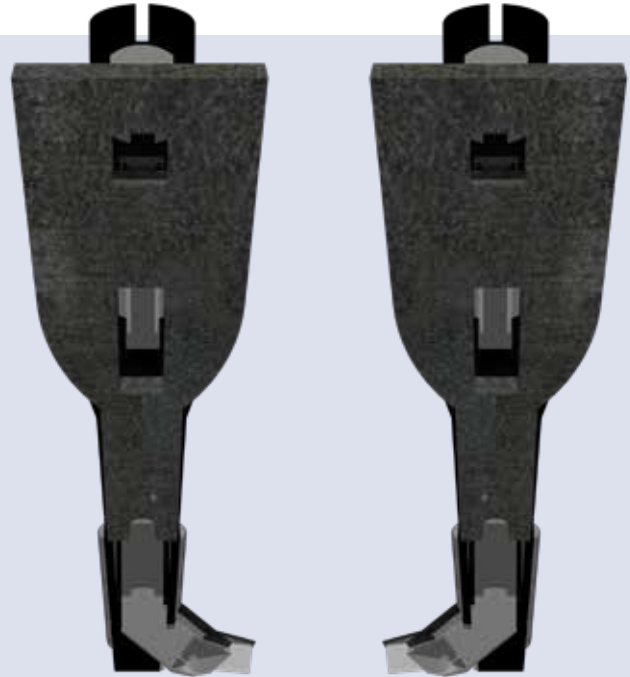
Hose size reducer.  
CZM0R0

# THINGS TO KNOW

## LEFT & RIGHT OPENERS

For opener lefts and rights, look from behind the air drill and take note of which direction the wing/chute of the opener points. For a left opener, the wing and chute will point out to the left side of the opener, whereas for a right they will point to the right.

When mounting an opener onto your drill, wings should always point to the middle of the air drill to ensure there is no plugging during sharp turns.



RIGHT OPENER

LEFT OPENER

## SCRAPERS

For scraper lefts and rights, look from behind the air drill and take note of which side the scraper wing points. For a left scraper, the wing will point to the left, whereas for a right scraper they will point to the right.

For scrapers with no wing, lefts and rights are based on which side of the disc the scraper is on from behind. A left scraper will be to the left of the disc, and right will be to the right.

For CNH disc drills, a left scraper will always be on the right half of the drill, and a right scraper will always be on the left of the drill.

For Bourgault Mid Row Banding scrapers, lefts and rights are interspersed throughout the drill at random so extra caution should be paid when counting the numbers to order.



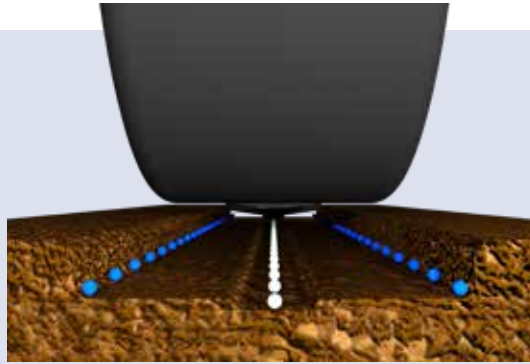
RIGHT SCRAPER

LEFT SCRAPER

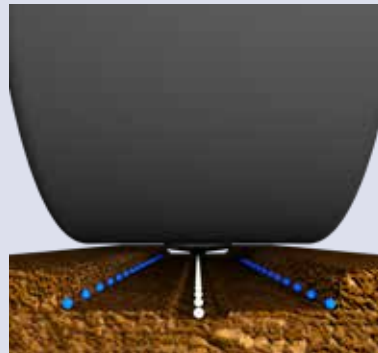


## PACKER TIRE WIDTH

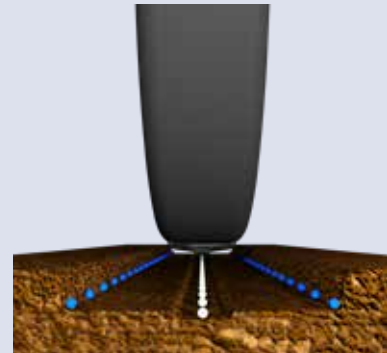
When choosing the correct opener for your application needs, packer tire width plays an important role in what openers can be used effectively. When suggesting openers, we always want to make sure that there is at least 0.5" of packer tire width outside the width of the opener to ensure that planted seeds are getting adequate packing. Using too narrow a packer tire could mean that your tire is pressing down and missing packing the seed into the furrow. On the opposite side, using a packer tire that is much wider than your opener can lead to the tire riding on the untilled ground not putting any pressure down to pack the seed.



CORRECT



TOO WIDE



TOO NARROW

## TWIN BAND OPENERS

Atom-Jet's line of Twin Band openers places seed and NH3 on the same plane. During seed placement, the seed is directed opposite the NH3, providing excellent separation and seed safety. Because they're on the same plane, seed-to-soil contact is superior and seedbed fracturing is effectively non-existent. The NH3 wing is slightly tilted down to improve furrow closing speed, ensuring that NH3 stays sealed in the ground where it's needed.

The design of the Twin Band not only allows for excellent separation between seed and NH3, but the additional third chute in the middle of the furrow allows for a band of granular fertilizer to be placed down between the seed and NH3 bands making this a true triple-shoot opener.

Twin Bands provide a cost-effective and trustworthy alternative solution to Mid-Row Banders.

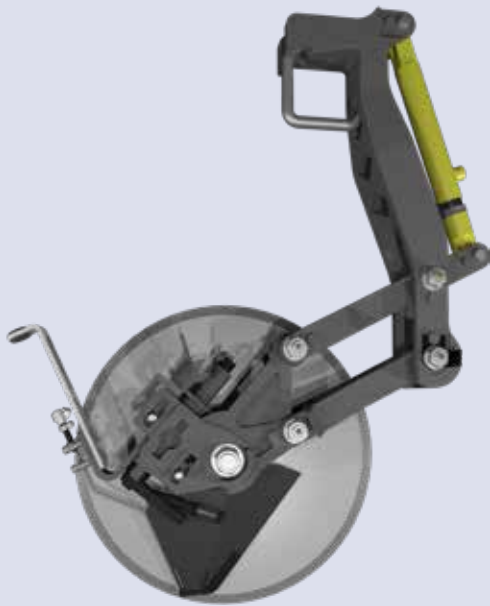


## SCRAPER PLACEMENT GUIDE

Atom-Jet scrapers are designed to be initially mounted so the lowest point of the leading edge of the scraper is  $\frac{1}{8}$ " above the bevelled edge of the disc. This applies to new drills or new discs.

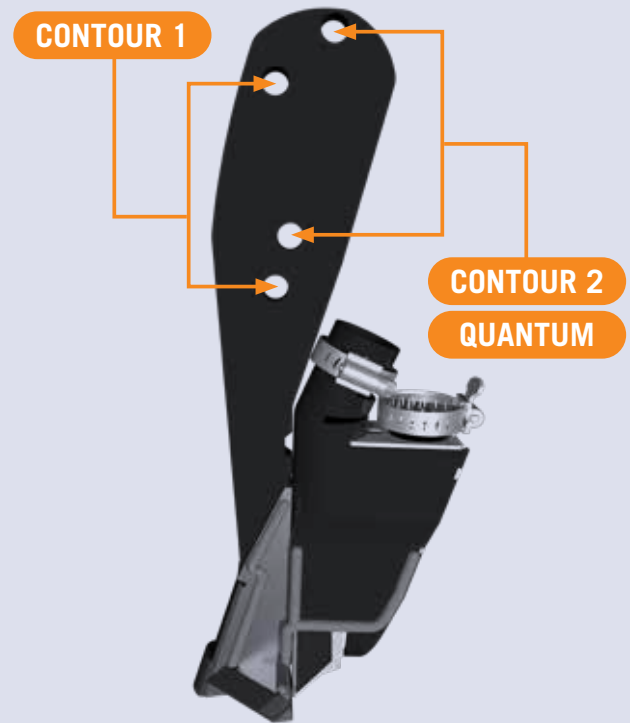
If the discs are slightly worn at the time of installation, set each scraper to be between  $\frac{1}{2}$ " and  $\frac{3}{4}$ " from the edge of the disc.

Over the life of the scraper, ensure that the wing and tube always remain within the diameter of the disc. Once the wing no longer is within the diameter of the disc, the discs are ready to be replaced.



## BOLT HOLE GUIDE

Atom-Jet openers are designed to be compatible with all Morris Contour 1, Contour 2, and Quantum drills. When mounting your openers to these drills, be sure to follow the bolt hole guide shown here.



## PATENTED CARBIDE INSERT

This opener was designed after requests from our customers in dry regions who wanted an ultra-low disturbance opener. The narrow point provides less soil disturbance, which in turn helps to keep the moisture in the furrow. With the narrower point, increased side pressure from the furrow usually wears thinner points out too quickly; therefore, the Atom-Jet R&D team designed a carbide insert to keep the point from washing out on the sides. This innovation was patented (9,066,462 B2) and has proven itself in Montana and Australia where drier conditions exist.



## MID-ROW BANDING SCRAPER



**INSTALLATION VIDEO**

[agriculture.atomjet.com/mrb-scraper-video](http://agriculture.atomjet.com/mrb-scraper-video)



**INSTALLATION GUIDE**

[agriculture.atomjet.com/mrb-scraper-install](http://agriculture.atomjet.com/mrb-scraper-install)

## CASE IH SDX DUAL SHOOT



**INSTALLATION VIDEO**

[youtu.be/WunYTm79ruQ](https://youtu.be/WunYTm79ruQ)



**INSTALLATION GUIDE**

[agriculture.atomjet.com/cih-sdx-dual-install](http://agriculture.atomjet.com/cih-sdx-dual-install)

## CNH PRECISION DISC



**INSTALLATION VIDEO**

[youtu.be/kLKRmfZBGh0](https://youtu.be/kLKRmfZBGh0)



**INSTALLATION GUIDE**

[agriculture.atomjet.com/cnh-scraper-install](http://agriculture.atomjet.com/cnh-scraper-install)

## SEED OPENERS



**INSTALLATION GUIDES**

[agriculture.atomjet.com/  
installation-guides-for-seed-openers](http://agriculture.atomjet.com/installation-guides-for-seed-openers)





## SCRAPERS FOR JOHN DEERE

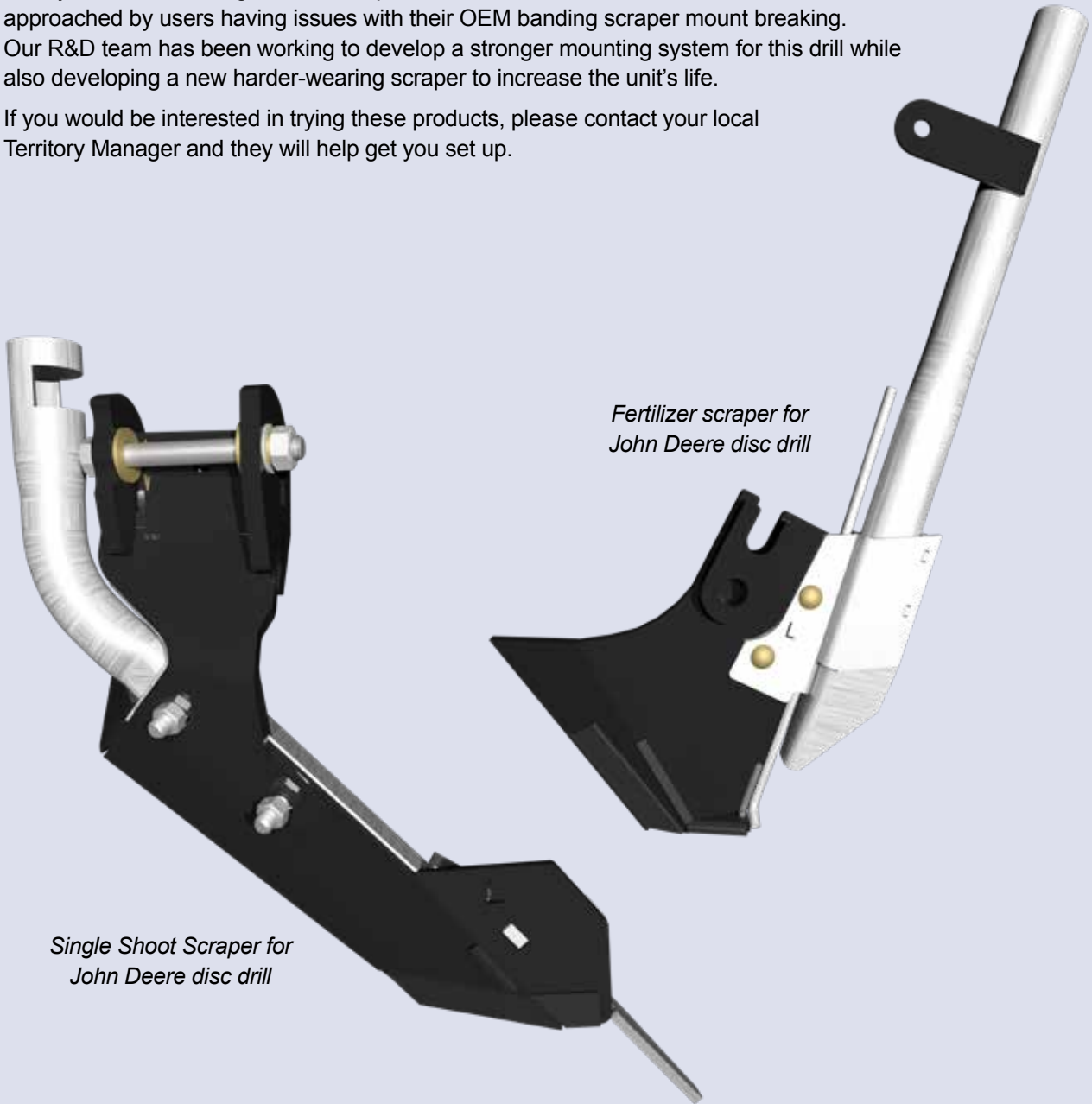
After releasing our line of Single and Dual Shoot scrapers for the CNH Precision disc drills, users of the John Deere 1890 line of disc drills came to us looking for a similar system.

Atom-Jet's Research and Development team has been working on a longer-lasting replacement single shoot scraper for the John Deere 1890. Optimized carbide placement, coupled with abrasion-resistant plate, makes our replacement single shoot scrapers the perfect match for this drill.

For users looking for a Dual Shoot option to allow them to put down a full rate of fertilizer along with the seed, we have been working to develop a dual shoot liquid scraper for this unit. With the 1890 row units not having a parallel linkage, our scraper package is designed with angle adjustment in the scraper to keep the wing running parallel to the ground at whatever depth the operator is running at.

Finally, for users running the 1895 Separate Fertilizer Placement version of the drill, Atom-Jet was approached by users having issues with their OEM banding scraper mount breaking. Our R&D team has been working to develop a stronger mounting system for this drill while also developing a new harder-wearing scraper to increase the unit's life.

If you would be interested in trying these products, please contact your local Territory Manager and they will help get you set up.



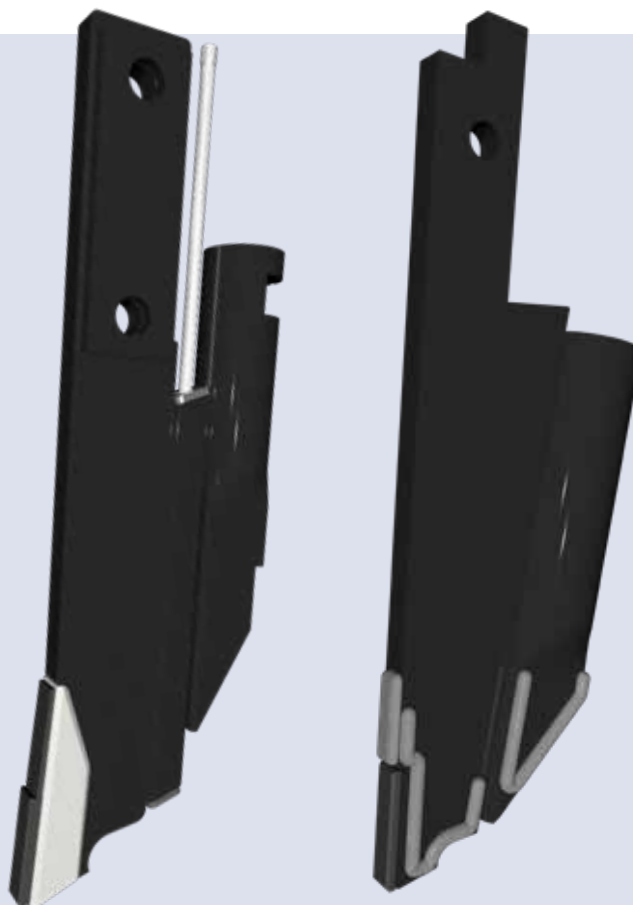
## KNIVES FOR BOURGAULT PLDS

Over the last two seasons our R&D team has been working with cooperators using the Bourgault PLDS drill to develop a new line of long-lasting knives for this unit.

Our fertilizer knife for this unit comes with a high-chrome cast point and is capable of putting down any combination of fertilizer types.

For the seed knife, our combination of high-grade carbide and base material choice extends the life of the knife. The large chute ensures this product will not plug even while planting broad seeds.

If you would be interested in testing these products, speak to your local Territory Manager and they will help get you set up.



## ROW CLOSERS

Following the launch of our Row Closers for Bourgault Paralink, Atom-Jet has worked to design a set of closers for the CNH Flex Hoe and Morris Contour 1, 2, and Quantum air drills. These discs mount to the shank to catch the soil thrown by the openers and place it back into the furrow ahead of the packer tire. This allows operators to use wider openers at increased operation speeds while still leaving a smooth field finish.



**Atom-Jet Industries 2-Year Limited Warranty – Ag Products**  
**Atom-Jet Industries 1-Year Limited Warranty – Hydraulic Systems**

Atom-Jet Industries (2002) Ltd. warrants each new product to be free from defects in material and workmanship. This warranty is applicable only for the normal service life expectancy of the product or components, not to exceed 24 consecutive months (12 consecutive months for hydraulic systems) from the date of delivery of product to the original purchaser. Proof of purchase is required. Warranty is limited to the replacement of the failed product.

Under no circumstances will the warranty cover any products or components thereof, which, in the opinion of the company, has been subject to misuse, unauthorized modification, alteration, and accident or if repairs have been made with parts other than those obtainable through Atom-Jet Industries (2002) Ltd.

Our obligation under this warranty shall be limited to repairing or replacing, free of charge to the original purchaser, any part that, in our judgment, shall show evidence of such defect, provided further that such part, if so requested shall be returned within forty-five (45) days from date of failure to Atom-Jet Industries (2002) Ltd. routed through the dealer and/or distributor from whom the purchase was made, transportation charges prepaid.

This warranty shall not interpret to render Atom-Jet Industries (2002) Ltd. or dealer liable for injury or damages of any kind or nature to person or property. This warranty does not extend to the loss of crops, loss due to delay in harvest, or any expense or loss incurred for labor, substitute machinery, rental or other reason.

Except as set forth above, Atom-Jet Industries (2002) Ltd. shall have no obligation or liability of any kind on account of any of its equipment and shall not be liable for special or consequential damages. Atom-Jet Industries (2002) Ltd. makes no other warranty, expressed or implied, and, specifically, Atom-Jet Industries (2002) Ltd. disclaims any implied warranty.

This warranty is subject to any existing conditions of supply which may directly affect our ability to obtain materials or manufacture replacement parts.

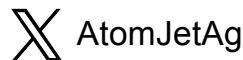
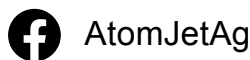
Atom-Jet Industries reserves the right to make improvements in design or changes in specifications at any time, without incurring any obligation to owners of units previously sold.

No one is authorized to alter, modify or enlarge this warranty nor the exclusion, limitations and reservations of the warranty stated above.

Disclaimer: Atom-Jet Industries reserves the right to make improvements in design and changes in specifications at any time without notice and without incurring any obligation to install them on units previously sold. Specifications, descriptions and illustrative material herein are as accurate as known at the time of publication but are subject to change without notice.

With double shoot openers, the placement of the seed and fertilizer is very important. The amount of fertilizer that can be applied with any double shoot opener depends to a great extent on the degree of separation between the fertilizer and the seed, but also depends on a number of other variables such as the amount of moisture in the soil, the amount of organic matter in the soil, the soil type and the type of crop being seeded. It is our policy that we do not recommend or endorse specific "safe" rates of fertilizer for our double shoot openers. We suggest that producers consult with their local agronomist for their expertise on specific fertilizer rates for their application.

Stay in touch with  
**Atom-Jet Group** by scanning  
the QR code to join our email list  
to receive special offers and news.  
Or visit [agriculture.atomjet.com/email-sign-up](http://agriculture.atomjet.com/email-sign-up)



13-AJ-CA-AG-E-64559-1-WP

2110 PARK AVENUE, BRANDON, MANITOBA, CANADA R7B 0R9

PHONE: 1-800-573-5048 | FAX: 204-726-5734 | EMAIL: [AGRICULTURE@ATOMJET.COM](mailto:AGRICULTURE@ATOMJET.COM) | [AGRICULTURE.ATOMJET.COM](http://AGRICULTURE.ATOMJET.COM)