

INSTALLATION INSTRUCTIONS

FRONT MOUNT NON-FREEZE FERTILIZER KNIFE



2110 Park Avenue Brandon, Manitoba, Canada R7B 0R9

Website: www.atomjet.com

Email: agriculture@atomjet.com

Phone: 1.204.728.8590

Fax: 1.204.726.5734

Toll Free: 1.800.573.5048

IMPORTANT WARRANTY/GUARANTEE INFORMATION

DO NOT DESTROY

Any claims under the guarantee must be COMPLETED BY OCTOBER 31 IN THE YEAR OF PURCHASE to qualify for a full refund. To satisfy a claim, Atom Jet Industries must be given the opportunity during the seeding season to rectify the problem or issue, if NOT THE GUARANTEE IS NULL AND VOID. Wear under normal use is not covered by warranty/guarantee.

To activate your warranty registration, scan this QR code using the application on your mobile device and fill out the online form. Upon receipt of the completed form, we will send you a free pair of Atom Jet work gloves.



WARRANTY IS TO BE COMPLETED BY OCTOBER 31 IN THE YEAR OF PURCHASE. The knives will either be replaced or repaired during this period. If you need to return a knife for warranty, please enclose your name, the farm name, address, phone number with area code, dealer purchased from, number of knives purchased, and the date of purchase. Please enclose copy of original invoice. Inclusion of the information will significantly speed up your warranty claim.

Get a
GOOD START
"IF SEEDING ISN'T DONE RIGHT, NOTHING ELSE MATTERS."

Before You Start

The knife is based on a 50° shank angle so shimming may be needed to adjust the knife to the correct angle. CHECK YOUR DRILL AND DO NOT ASSUME THE MANUFACTURER'S INFORMATION IS ACCURATE. Atom Jet reserves the right to refuse warranty if the shank angle is not within tolerances as shown below.

Following these instructions will ensure the correct angle of the knives, proper placement of fertilizer and increase the longevity of the knife.

Verifying The Knife Angle Using an Angle Finder

Install a few knives on your drill, at least one for each rank. Use the following procedure to ensure correct installation:

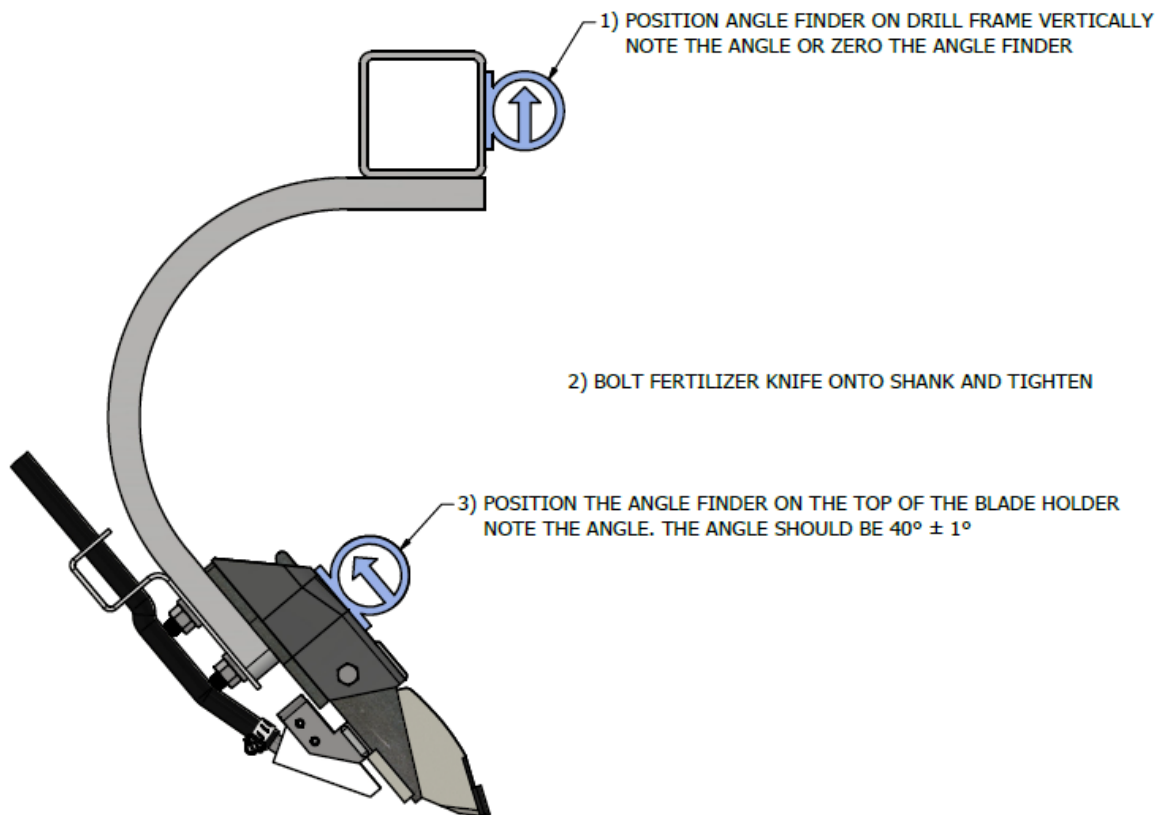


Figure 1: Angle measurement procedure

If the shank angle is not within the allowable $\pm 1^\circ$, your knives will need to be shimmed. Figure 2 on the next page shows which shims are needed and their part numbers.

Most John Deere 737 and 1820 drills require a shim (Part # ZT-CZNJ00) on the bottom hole of the knife to set the correct angle. Without the shim, the knife will be set at the incorrect angle (53°-54°).

Shanks that measure 47° should be shimmed with the part shown below (ZT-CZNK00) on the top bolt hole.

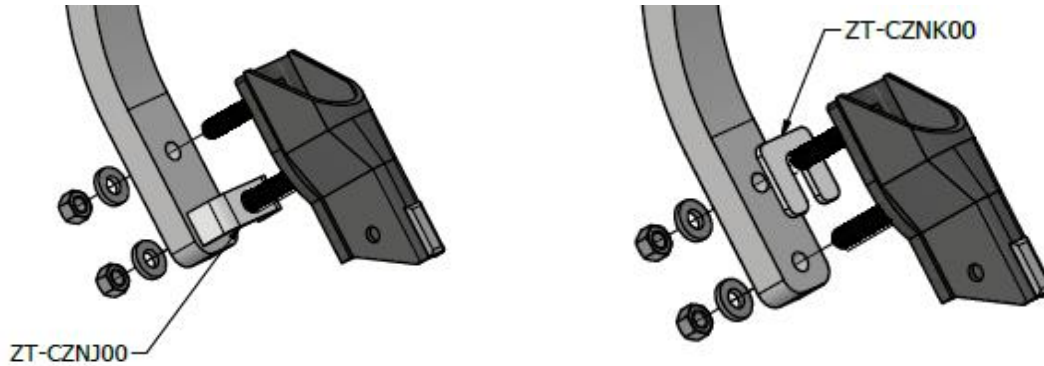


Figure 2: Shims to correct knife angle

If shims are needed to correct the shank angle, contact your dealer for pricing.

Knife Installation

- 1) Bolt the blade holder and hose bracket to the shank using the provided carriage bolts, washers, and nuts, remembering to check the shank angle as described in Figure 1.

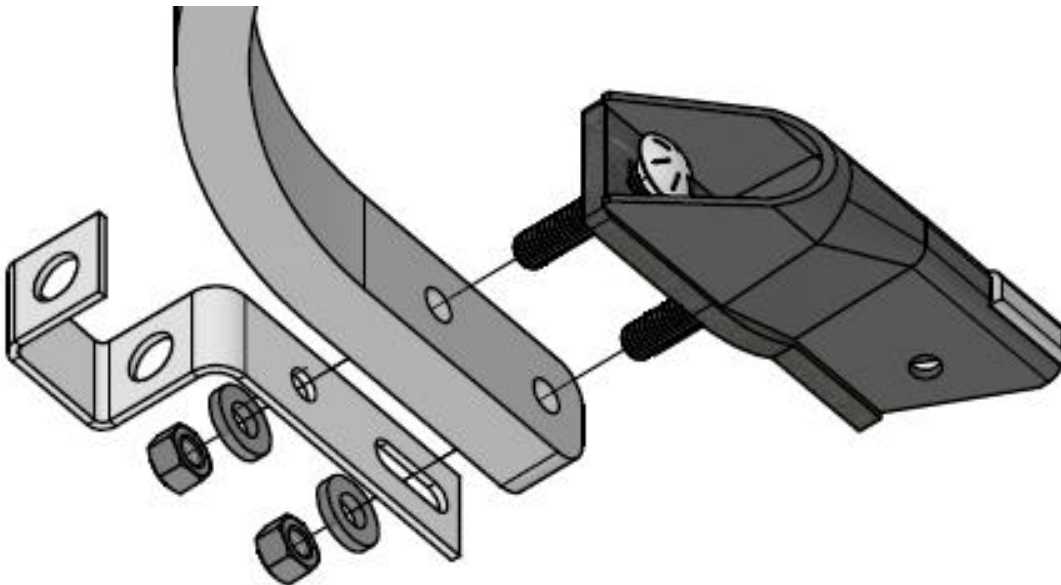


Figure 3: Bolting blade holder to shank

If your shank has 3 mounting holes, use the bottom 2 holes. This will mount the holder as close to the bottom of the shank as possible.

- 2) Install the knife blade by inserting it up into the blade holder. Secure it in the holder using the provided $\frac{7}{16}$ " bolt and locknut.

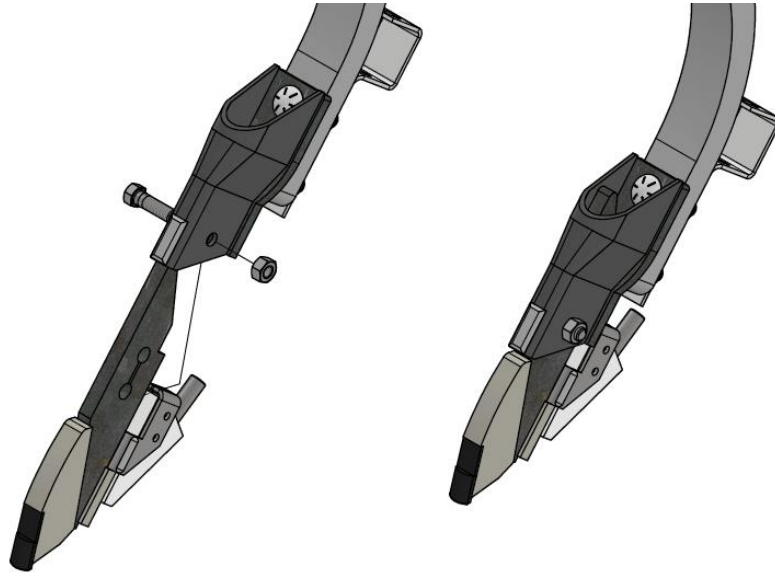


Figure 4: Installing knife blade

The knife blade has an upper mounting hole and a lower mounting hole. The diagram above has the knife mounted using the lower hole. This will be the standard configuration for most users. If you find you need more depth for deeper banding or because the depth adjustment on your machine is limited, use the upper mounting hole.

- 3) Slide the NH3 supply line through the hose bracket and over the pipe in the knife. Secure with the provided #6 hose clamp.



Figure 5: Install NH3 line

Knife Maintenance

Atom Jet fertilizer knives are designed to be tough, durable and reliable in all soil conditions. To extend the life of your knives even further, replacement UHMW inserts (ZT-KZMB40) and UHMW clips (ZT-KZMUCF) can be purchased from Atom Jet.

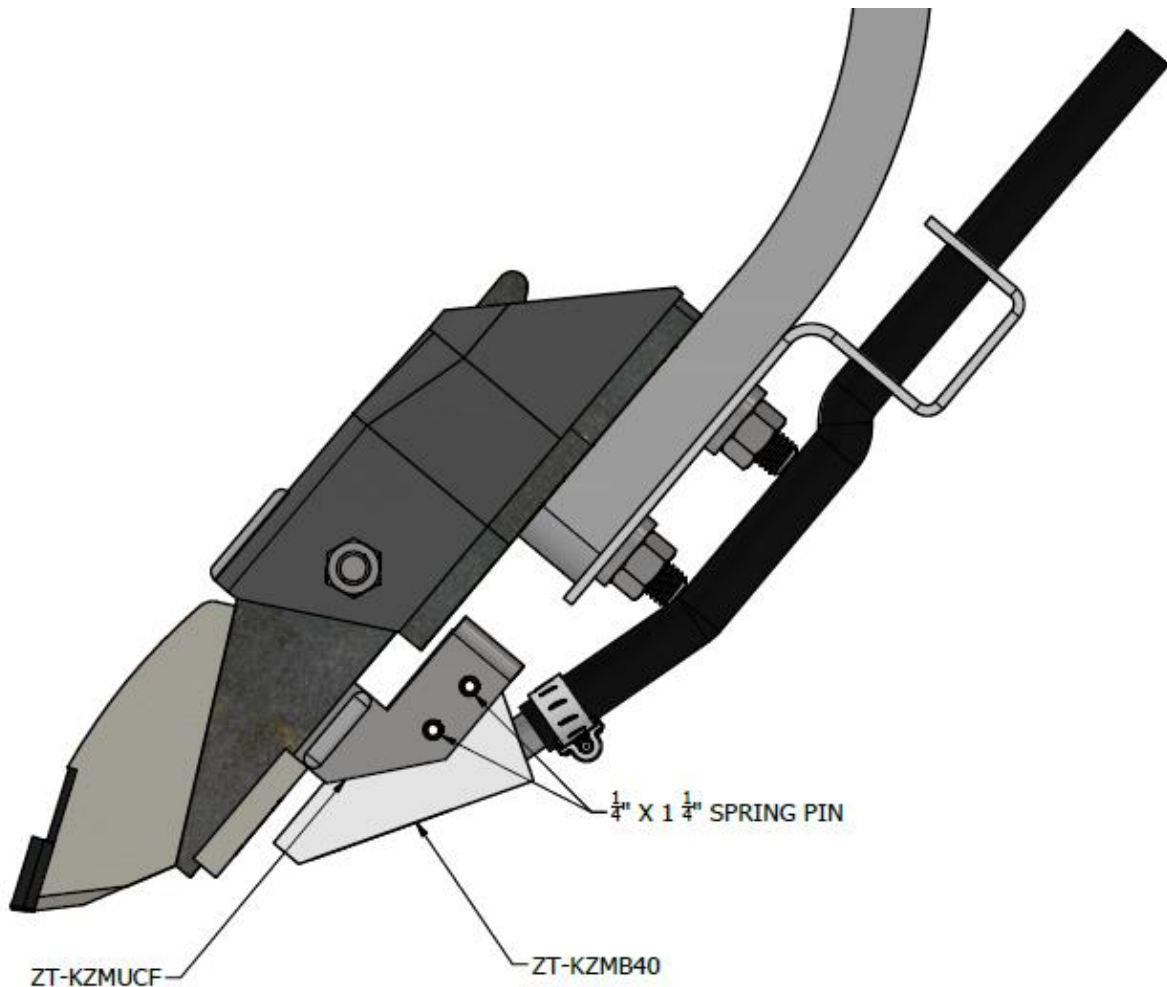


Figure 6: Replace worn components

To change the UHMW inserts, remove the NH₃ supply line and knock out the spring pins. Remove the old insert. Now, install the new insert as shown above using the provided spring pins.

To replace the UHMW clip, remove the NH₃ supply line and the UHMW insert. Then, grind the weld holding the old clip so the clip can be removed. Now, weld on the new clip and reinstall the UHMW insert and NH₃ line.