

INSTALLATION INSTRUCTIONS

**MID-ROW BANDING SCRAPER TO FIT BOURGAULT
MRB® SERIES 20, 25 AND 30**



2110 Park Avenue Brandon, Manitoba, Canada R7B 0R9

Website: www.atomjet.com

Email: agriculture@atomjet.com

Phone: 1.204.728.8590

Fax: 1.204.726.5734

Toll Free: 1.800.573.5048

IMPORTANT WARRANTY/GUARANTEE INFORMATION

DO NOT DESTROY

Any claims under the guarantee must be **completed by October 31 in the year of purchase** to qualify for a full refund. To satisfy a claim, Atom-Jet Industries must be given the opportunity during the seeding season to rectify the problem or issue, if **not the guarantee is null and void**. Wear under normal use is not covered by warranty/guarantee.

Warranty is to be completed by October 31 in the year of purchase. The scraper will either be **replaced** or **repaired** during this period. If you need to return a scraper for warranty, please enclose your name, the farm name, address, phone number with area code, dealer purchased from, number of scrapers purchased, the date of purchase and a copy of the original invoice. Inclusion of this information will significantly speed up your warranty claim.

To activate your warranty, scan this QR code using the application on your mobile device and fill out the online form. Upon receipt of the completed form, we will send you a free pair of Atom-Jet work gloves.



Get a
GOOD START

“ IF SEEDING  ISN'T DONE RIGHT, NOTHING ELSE MATTERS.”

BEFORE YOU START

Ensure your discs are in good working order. To function properly, the scraper needs to seal against the disc and be completely within the disc diameter. Check for scratches and deep gouges which may allow trash and debris to get between the scraper and the disc, leading to plugging and faster wearing of the scraper. Measure the discs to see if they are 17" in diameter or more. This is the smallest disc diameter at which the scraper can function properly.

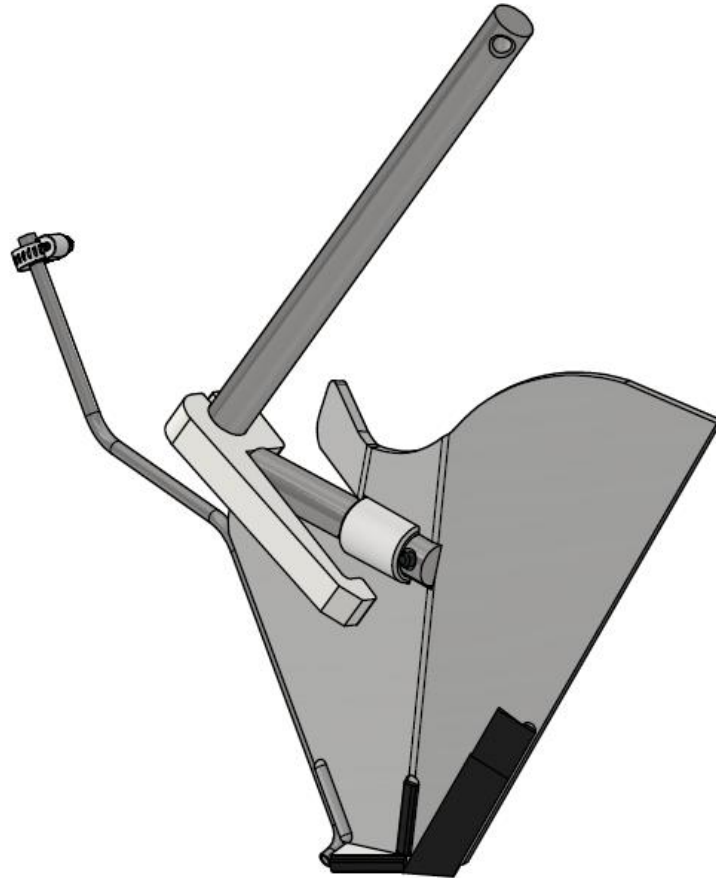


Figure 1: Assembled ZT-DMER12C25

Note: The scraper and arm for the 20, 25 and 30 series MRB® will not fit the MRB® III bander. If you received the incorrect parts, contact your dealer or territory manager. Be sure to provide them with the sales order number, the five-digit number found on the box labels your scrapers came in. Having this information will greatly aid Atom-Jet in rectifying any issue.

Some banding units come equipped with a kicker coultter (PN 6717-01) bolted to the inside of the hub. This tab helps remove debris from around the hub but interferes with the Atom-Jet scraper and must be removed for proper function of the scraper. Once the tab is removed, either reinstall the bolt in the same direction as it was installed or install a 1/2" x 3/4" fine thread bolt like the other three bolts installed. The Atom-Jet scraper comes with a built-in trash guard to prevent debris from getting behind the scraper and around the hub, replacing the kicker coultter.

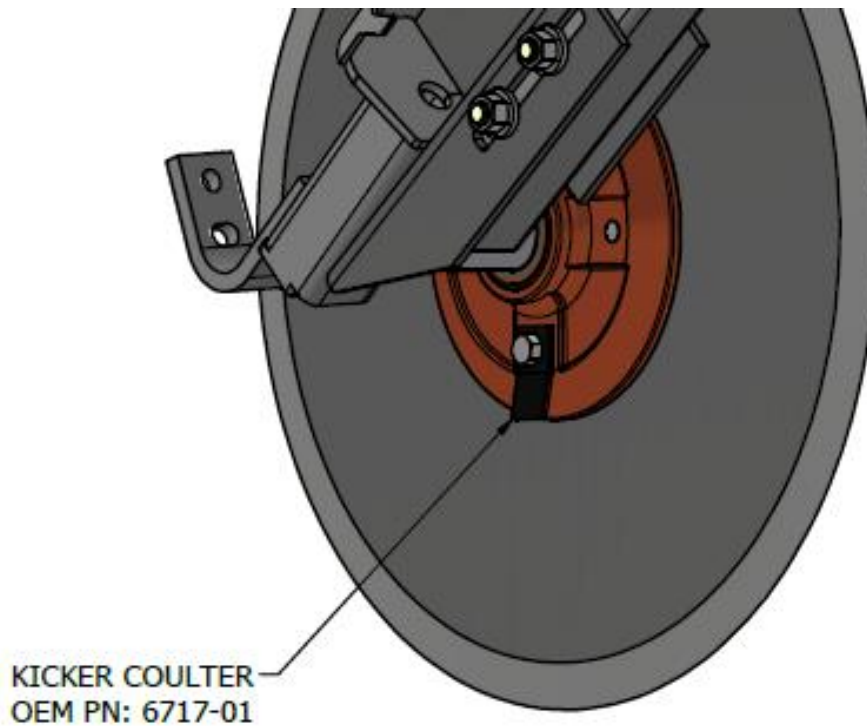


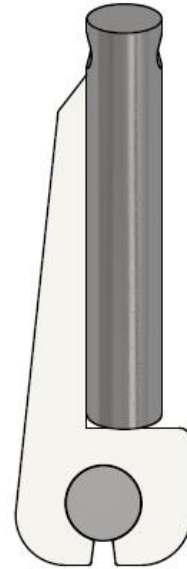
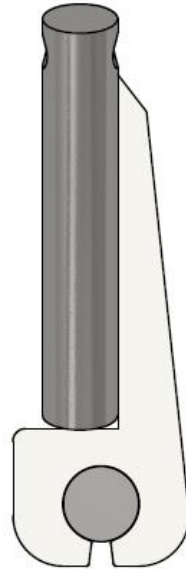
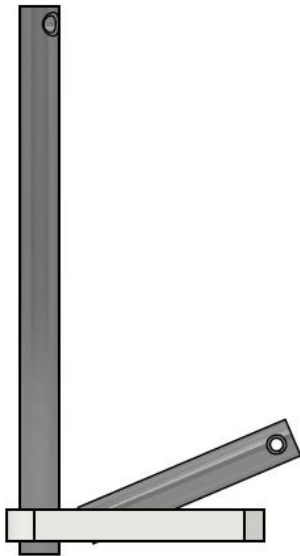
Figure 2: Remove kicker coulter

INSTALLATION

Here is a list of all the parts needed to install the scraper on the row unit:

- Scraper
- Mounting Arm
- 1/4" x 1" Roll pin
- One #4 hose clamp
- Mounting bolt (not provided)
- Hose bushing, hose barb, #4 hose clamp and #6 hose clamp
(for ZT-DMEL1325, ZT-DMER1325, ZT-DMEL1425 and ZT-DMER1425)
- Compression Union (for ZT-DMEL1125 and ZT-DMER1125)

- 1) Assemble the scraper and mounting arm. Match the mounting arms to their scrapers. The difference between the left and right arms is shown below.



This is a right mounting arm. The vertical shaft is the upper arm, and the angled shaft is the lower arm.

Viewed from the top, this is a right arm

Viewed from the top, this is a left arm

Figure 3: Mounting shaft orientation

The scrapers have an L or R to designate their orientation. Fit the mounting arms to their matching scrapers by inserting the lower arm into the mount bushing in the scraper. Then install the provided roll pin to secure the scraper on the arm.

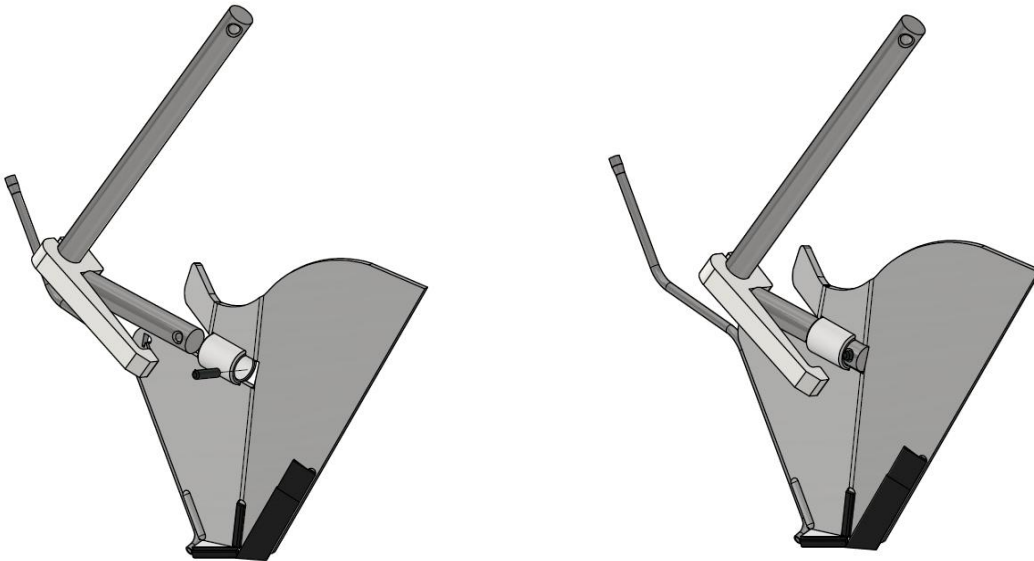


Figure 4: Mount arm to scraper (right scraper shown)

- 2) Install the adapters for supply lines that are $\frac{3}{8}$ " or $\frac{1}{2}$ " ID or the compression union for $\frac{1}{4}$ " OD lines. If you have $\frac{1}{4}$ " ID lines, go to step 3. Start by warming up one end of the hose bushing with a heat gun or a pot of boiling water. Then push the warm end onto the scraper tube, passed the flare. Secure it with a #4 hose clamp.

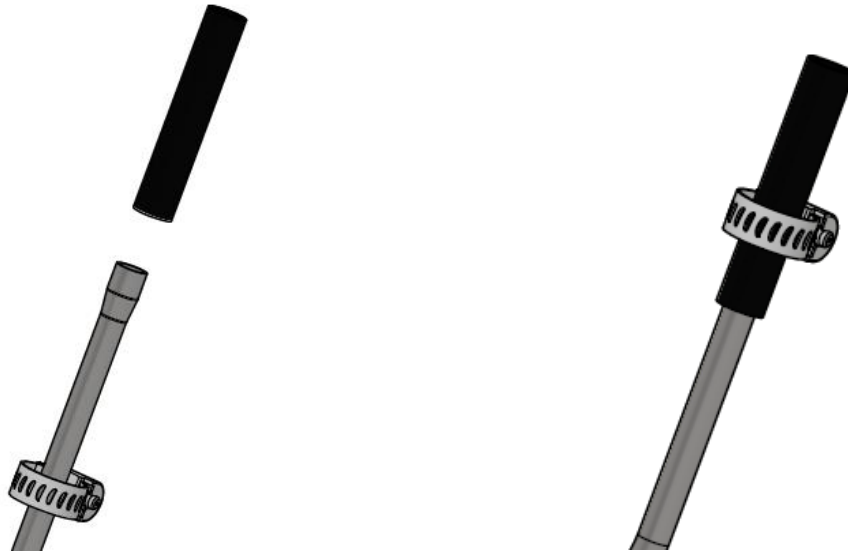


Figure 5: Install hose bushing

Now, warm up the other end of the hose and install the barbed fitting, securing it with the other #4 hose clamp.

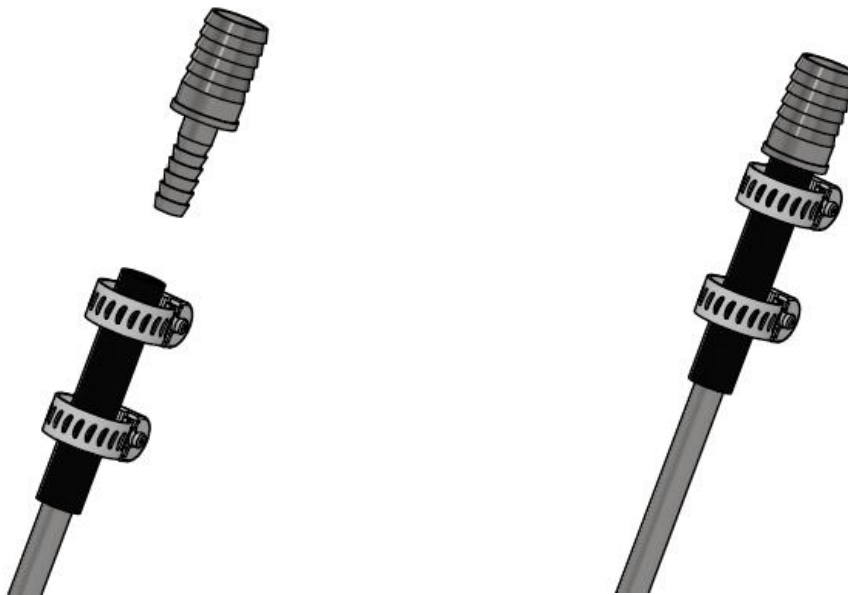


Figure 6: Install hose barb

To install the compression union, loosen the nut on one end and slide it over the scraper tube. Tighten the nut to seal the joint.

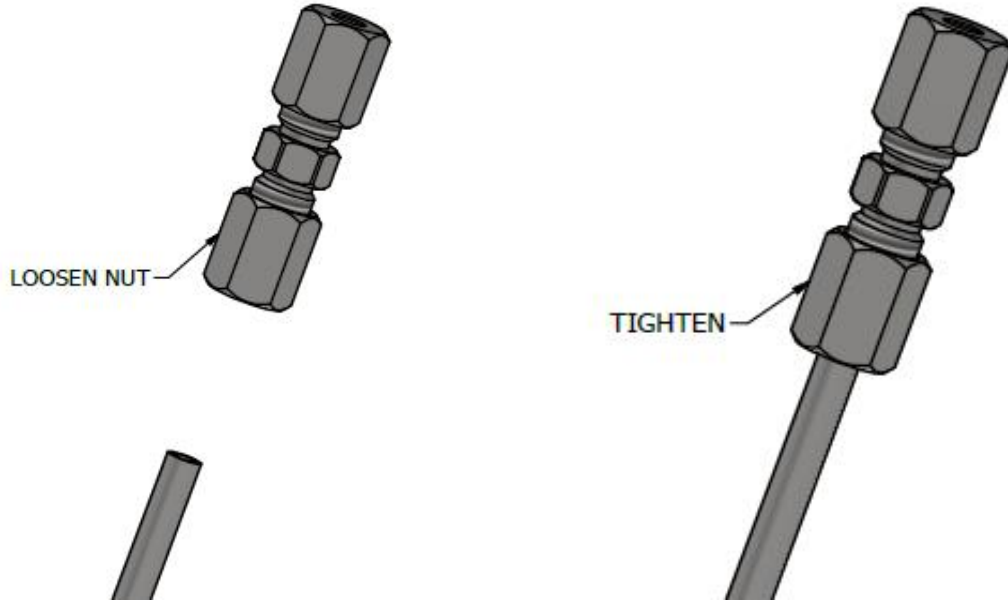


Figure 7: Install compression union

- 3) Install the scraper and arm assembly into the mounting bracket on the row unit. It will install in the same place as the OEM.

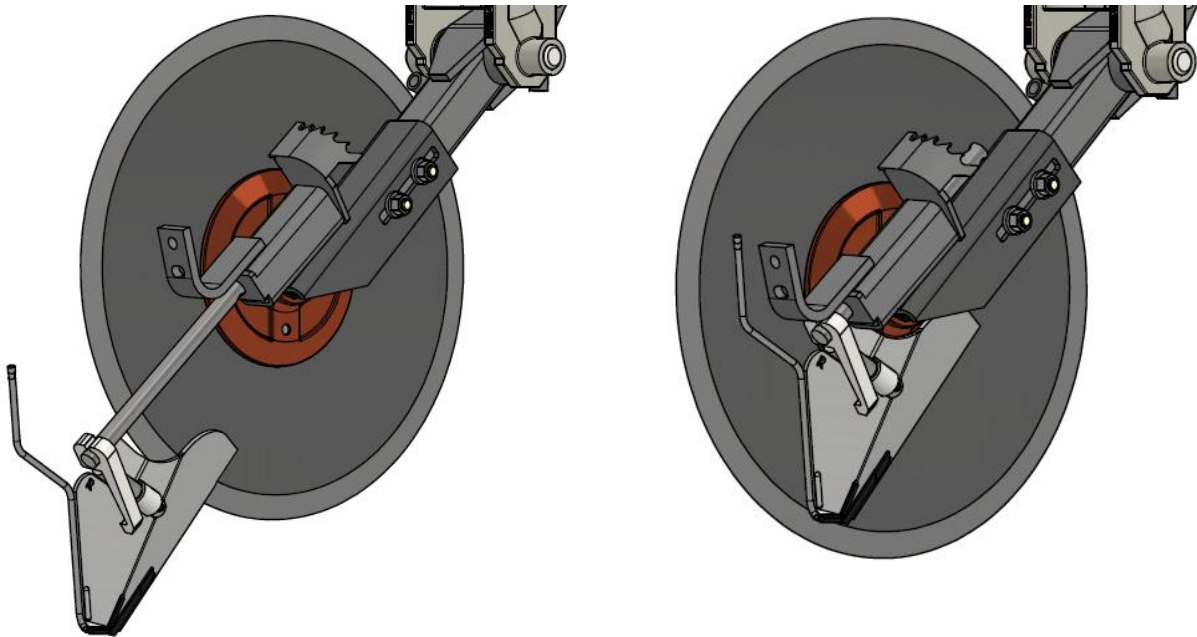


Figure 8: Install assembly on row unit

Before leaving the plant, all Atom-Jet scrapers have the tab on the back of the scraper bent a consistent angle to clear the mounting bracket when it's installed on the unit. This is a controlled process, and each scraper is checked before packaging.

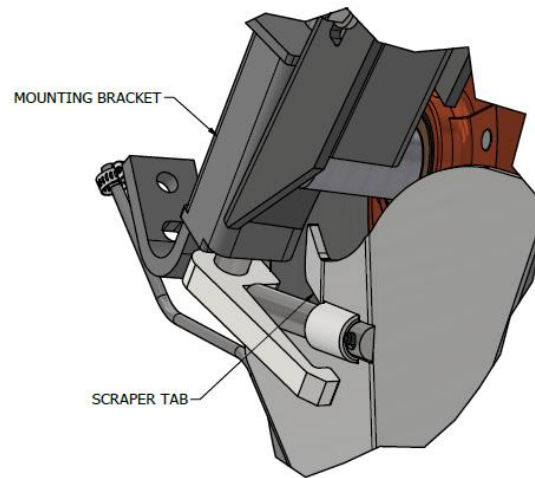


Figure 9: Check the scraper tab

However, if you notice that the scraper tab is hitting the mounting bracket and not allowing the scraper to slide up around the hub, simply use a crescent wrench and a vice to bend the tab more to allow it to pass the bracket. If you notice the tab is hitting the disc, bend the tab back so it clears the disc.

- 4) Install the spring bushing and torsion spring using a $\frac{5}{16}$ " x 2" bolt and lock nut. Start with the spring in the second or third notch and adjust if needed.

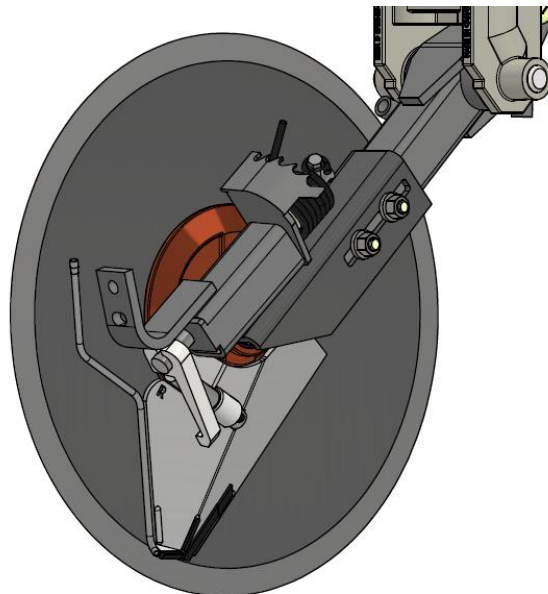


Figure 10: Install spring and spring bushing

- 5) To position the scraper on the disc, install the same number of plastic shims on each arm. The number will vary across drills due to disc wear.

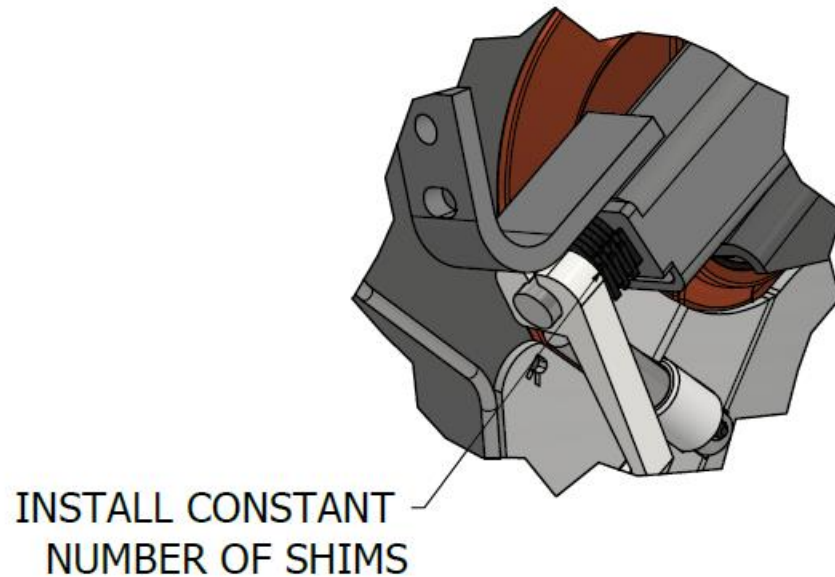


Figure 11: Adjust the scraper

Follow steps 1-5 for every unit on your drill.

- 6) To complete the adjustment of each scraper, loosen the bolts holding the mounting bracket to the row unit shown in Figure 12.

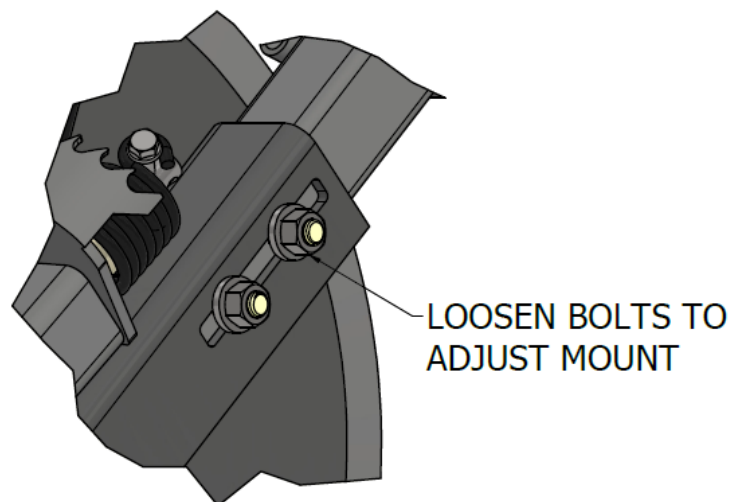


Figure 12: Loosen bolts to adjust the mount

Slide the mount up or down so that the bottom point on the scraper is $\frac{1}{8}$ " from the disc chamfer. If the discs are slightly worn, set each scraper to be the same distance from the edge of the disc. Retighten the bolts after the scraper is positioned properly.

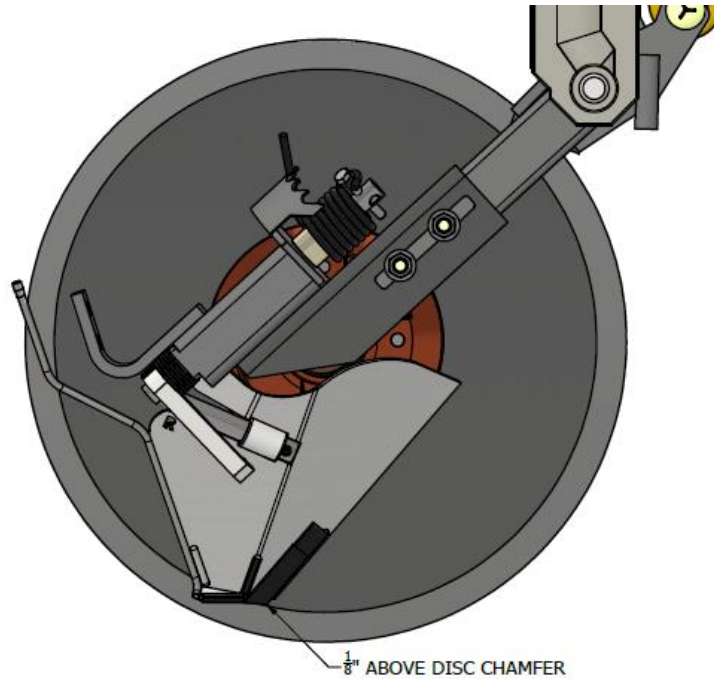


Figure 13: Final position of the scraper

Follow step 6 for every row unit. This ensures that every scraper starts at the same position relative to the disc at the start of use.

- 7) Finally, attach your supply line to the scraper. A $\frac{1}{4}$ " ID line will attach directly to the scraper and be secured with a #4 hose clamp. $\frac{3}{8}$ " and $\frac{1}{2}$ " ID lines will attach to the barbed fitting installed in step 3 and secured with a #6 hose clamp. $\frac{1}{4}$ " OD line attach using the compression union. Loosen the nut and push the line into the union. Tighten securely but be careful to not over tighten as the supply hose may split.

MAINTENANCE

Throughout the season, check your discs periodically for wear. When the bottom point of the scraper is $\frac{3}{8}$ " from the edge of the disc or scraper no longer sits entirely within the circumference of the disc, remove a shim from the bottom of the mounting arm and move it to the top. Once all the shims are removed and the disc is larger than 17" in diameter, repeat steps 5 and 6 to reposition the scraper on the worn disc.

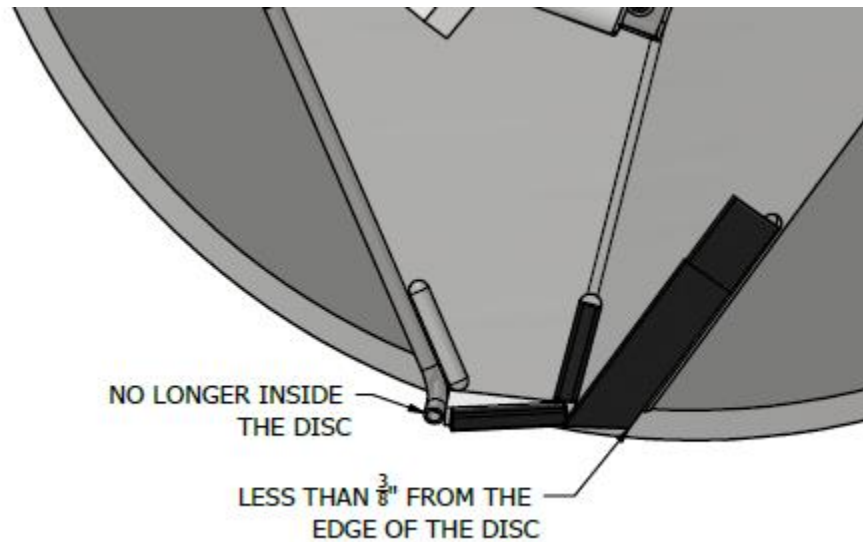


Figure 14: Conditions to reposition the scraper