

# ***INSTALLATION INSTRUCTIONS***

MID-ROW BANDING SCRAPER TO FIT BOURGAULT

MRB® III



**2110 Park Avenue Brandon, Manitoba, Canada R7B 0R9**

**Website:** [www.atomjet.com](http://www.atomjet.com)

**Email:** [agriculture@atomjet.com](mailto:agriculture@atomjet.com)

**Phone:** 1.204.728.8590

**Fax:** 1.204.726.5734

**Toll Free:** 1.800.573.5048

## IMPORTANT WARRANTY/GUARANTEE INFORMATION

### *DO NOT DESTROY*

Any claims under the guarantee must be **completed by October 31 in the year of purchase** to qualify for a full refund. To satisfy a claim, Atom-Jet Industries must be given the opportunity during the seeding season to rectify the problem or issue, otherwise **the guarantee is null and void**. Wear under normal use is not covered by warranty/guarantee.

**Warranty is to be completed by October 31 in the year of purchase.** The scraper will either be **replaced** or **repaired** during this period. If you need to return a scraper for warranty, please enclose your name, the farm name, address, phone number with area code, dealer purchased from, number of scrapers purchased, the date of purchase and a copy of the original invoice. Inclusion of this information will significantly speed up your warranty claim.

To activate your warranty, scan this QR code using the application on your mobile device and fill out the online form. Upon receipt of the completed form, we will send you a free pair of Atom-Jet work gloves.



Get a  
**GOOD START**



" IF SEEDING ISN'T DONE RIGHT, NOTHING ELSE MATTERS."

## BEFORE YOU START

Ensure your discs are in good working order. To function properly, the scraper needs to seal against the disc. Measure the discs to see if they are 17" in diameter or more. This is the smallest disc diameter at which the Atom-Jet scraper can function properly. Check for scratches and deep gouges which may allow trash and debris to get between the scraper and the disc, leading to plugging and faster wearing of the scraper.

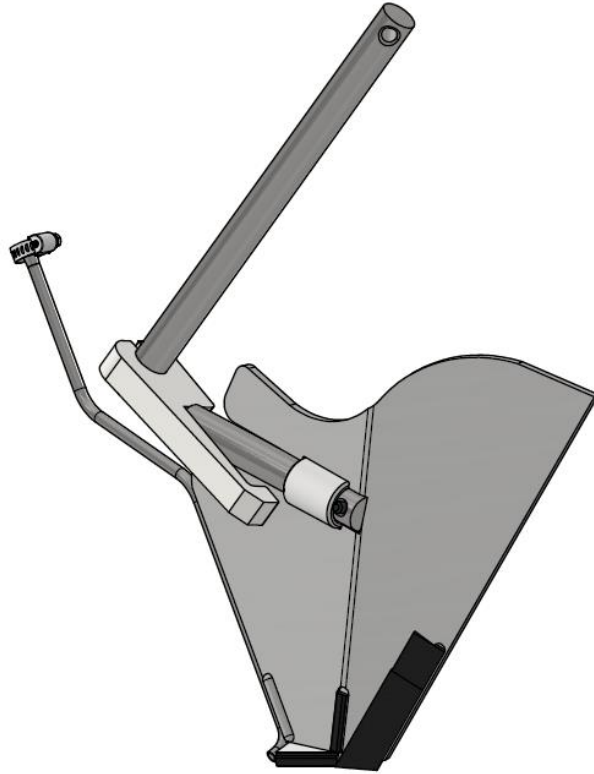


Figure 1: Assembled ZT-DMER12C

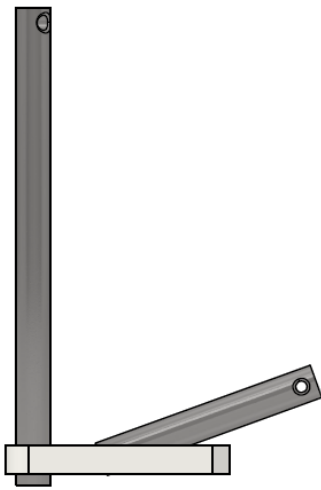
Note: The scraper and arm for the MRB® III will not fit on a series 20, 25 or 30 bander. If you received the incorrect parts, contact your dealer or territory manager. Be sure to provide them with the sales order number, the five-digit number found on the box labels your scrapers came in. Having this information will greatly aid Atom-Jet in rectifying any issue.

## INSTALLATION

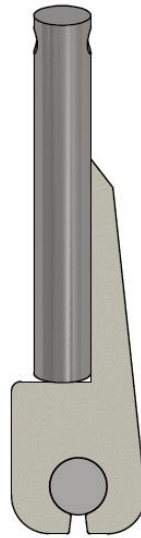
Here is a list of all the parts needed to install the scraper on the row unit:

- Scraper
- Mounting Arm
- ¼" x 1" Roll pin
- One #4 hose clamp
- Mounting bolt (not provided)
- Hose bushing, hose barb, #4 hose clamp and #6 hose clamp (for ZT-DMEL13, ZT-DMER13, ZT-DMEL14 and ZT-DMER14)
- Compression Union (for ZT-DMEL11 and ZT-DMER11)

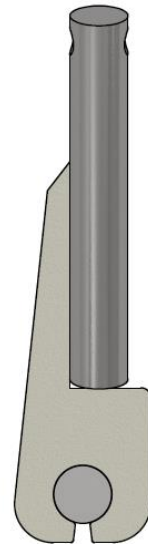
- 1) Assemble the scraper and mounting arm. Match the mounting arms to their scrapers. The difference between the left and right arms is shown below:



This is a right mounting arm. The vertical shaft is the upper arm, and the angled shaft is the lower arm.



Viewed from the top, this is a right arm.



Viewed from the top, this is a left arm.

Figure 2: Mounting shaft orientation

The scrapers have an L or R to designate their orientation. Fit the mounting arms to their matching scrapers by inserting the lower arm into the mount bushing in the scraper. Then install the provided roll pin to secure the scraper on the arm.

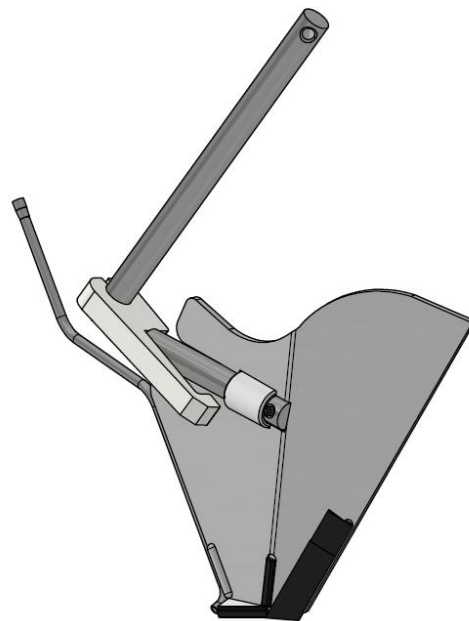
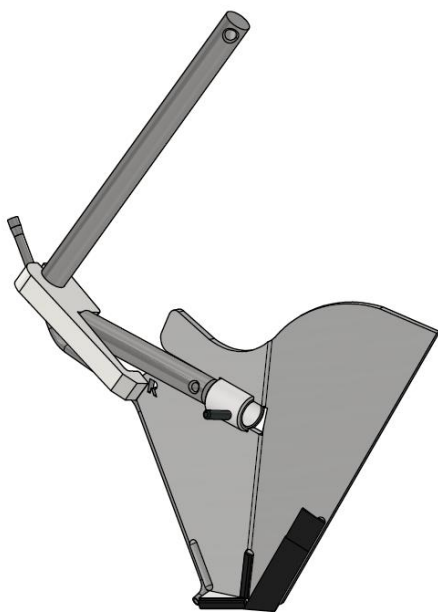


Figure 3: Mount arm to scraper

- 2) Install the adapters for supply lines that are  $\frac{3}{8}$ " or  $\frac{1}{2}$ " ID or the compression union for  $\frac{1}{4}$ " OD lines. If you have  $\frac{1}{4}$ " ID lines, go to step 3. Start by warming up one end of the hose bushing with a heat gun or a pot of boiling water. Then push the warm end onto the scraper tube, passed the flare. Secure it with a #4 hose clamp.

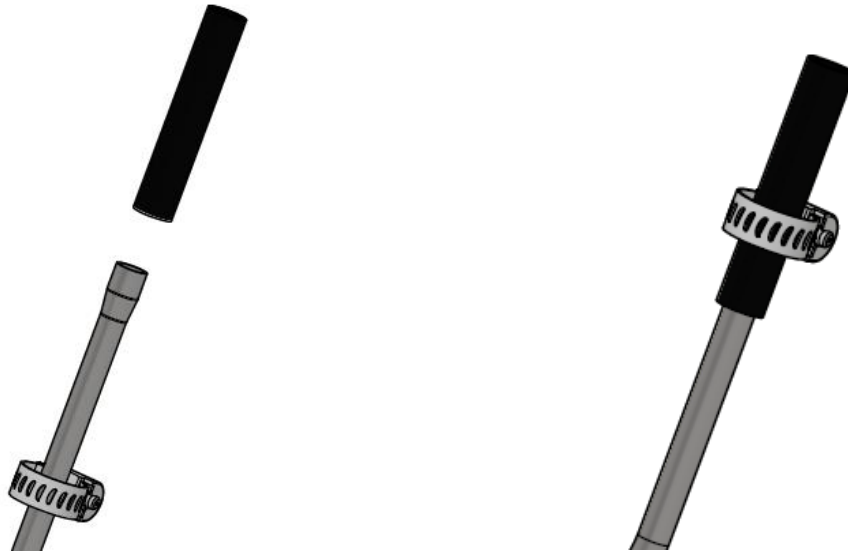


Figure 4: Install hose bushing

Now, warm up the other end of the hose and install the barbed fitting, securing it with the other #4 hose clamp.

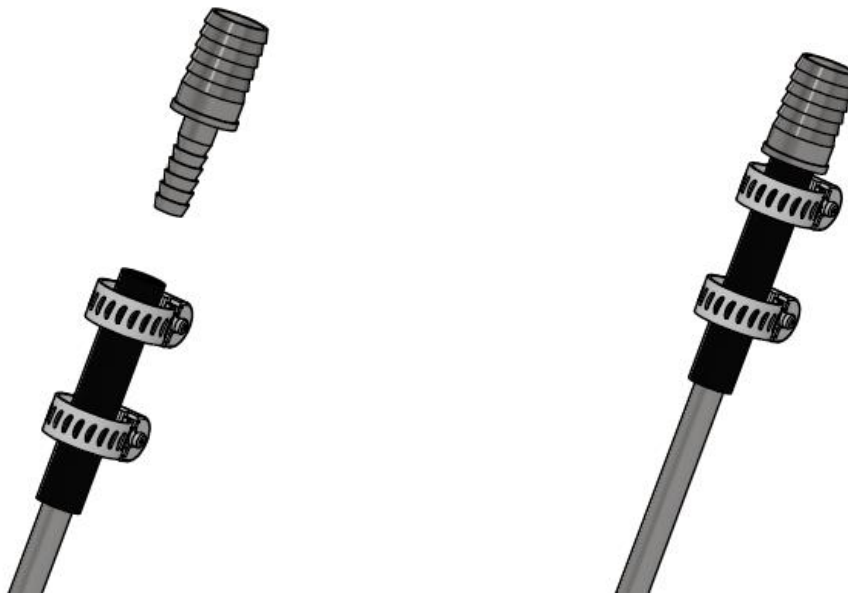


Figure 5: Install hose barb

To install the compression union, loosen the nut on one end and slide it over the scraper tube. Tighten the nut to seal the joint.

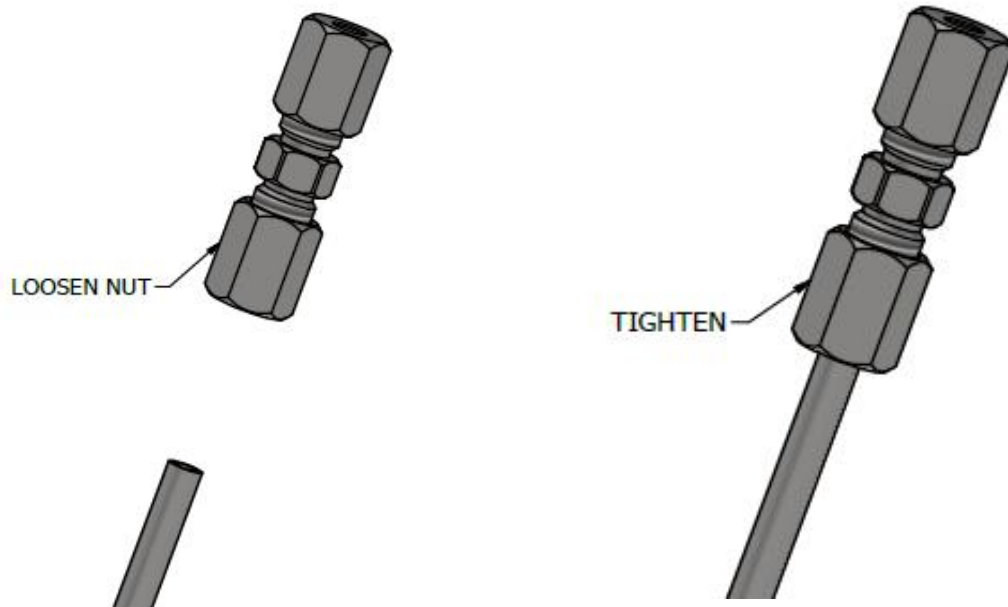


Figure 6: Install compression union

- 3) Install the scraper and arm assembly into the mounting bracket on the row unit. It will install in the same place as the OEM.

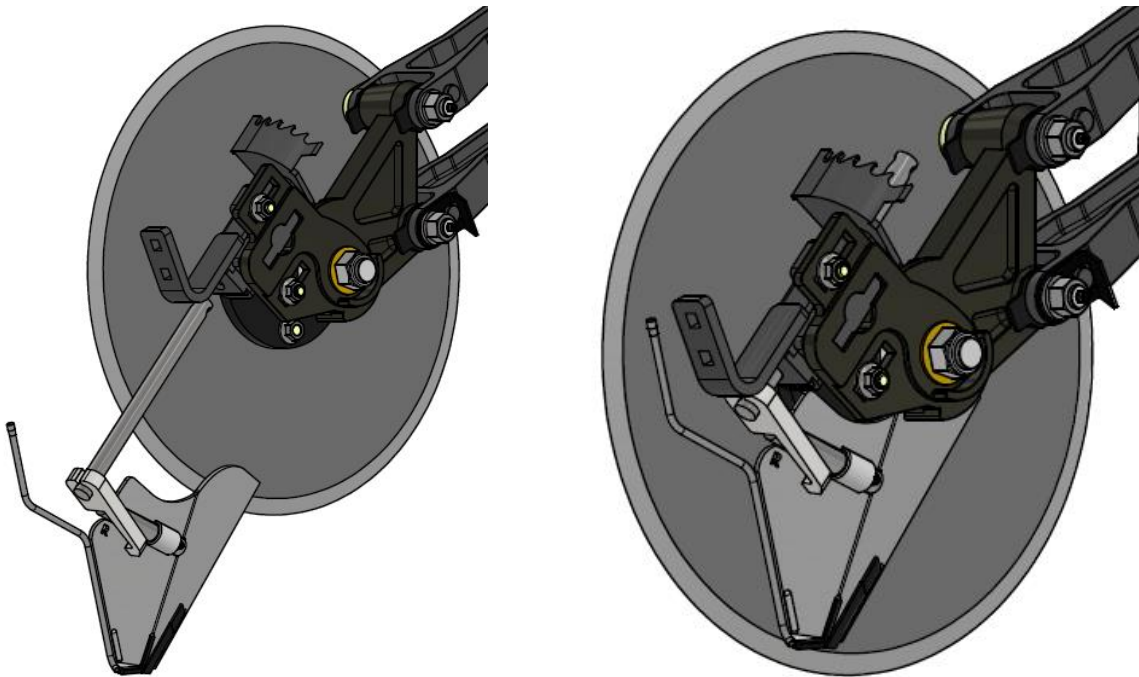


Figure 7: Install assembly on row unit

- 4) Install the spring bushing and torsion spring using a  $\frac{5}{16}$ " x 2" bolt and lock nut. Start with the spring in the second or third notch and adjust if needed.

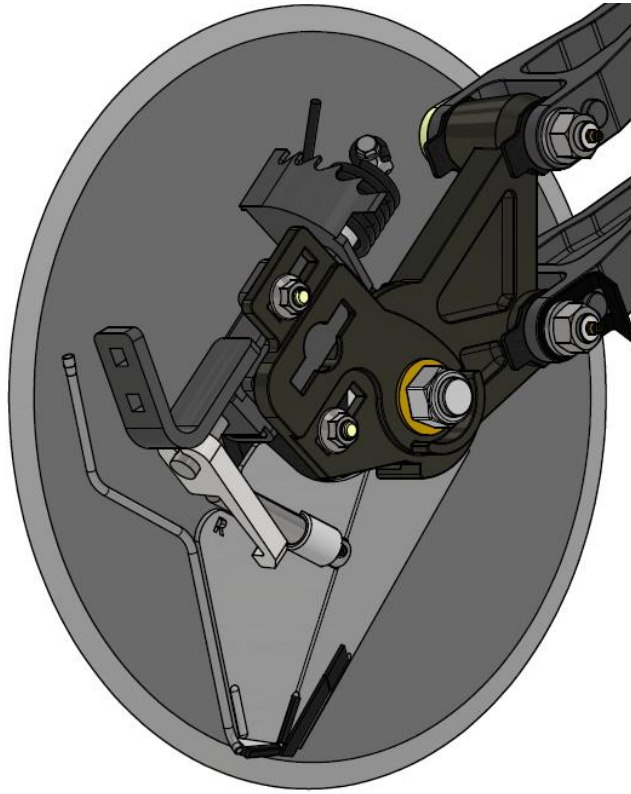


Figure 8: Install spring and spring bushing

- 5) To position the scraper on the disc, install the same number of shims on each arm. The number will vary across drills due to disc wear. Follow steps 1-4 for every unit on your drill.

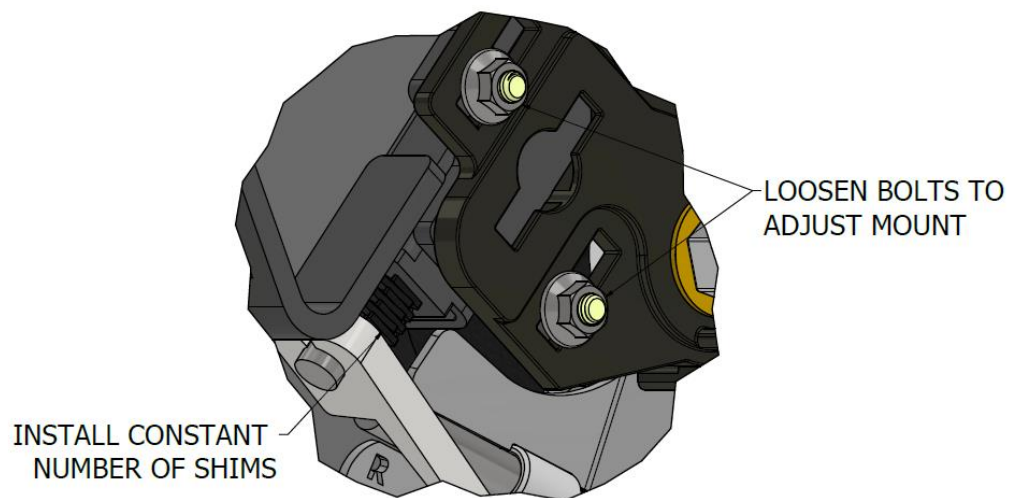


Figure 9: Adjust the scraper



- 6) To complete the adjustment of each scraper, loosen the bolts holding the mounting bracket to the row unit shown in Figure 9. Slide the mount up or down so that the bottom point on the scraper is  $\frac{1}{8}$ " from the disc bevel. If the discs are slightly worn, set each scraper to be the same distance from the edge of the disc. Retighten the bolts after the scraper is positioned properly.

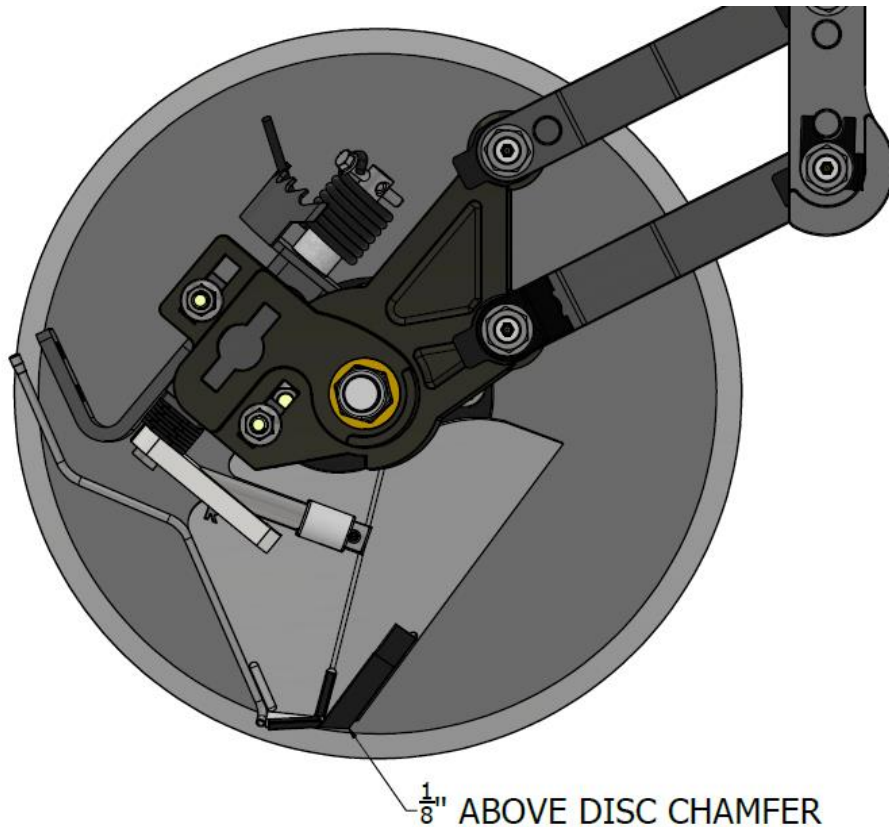


Figure 10: Final position of the scraper

Follow step 5 for every row unit. This ensures that every scraper starts at the same position relative to the disc at the start of use.

- 7) Finally, attach your supply line to the scraper. A  $\frac{1}{4}$ " ID line will attach directly to the scraper and secured with a #4 hose clamp.  $\frac{3}{8}$ " and  $\frac{1}{2}$ " lines will attach to the barbed fitting installed in step 3 and secured with a #6 hose clamp. For the  $\frac{1}{4}$ " OD line, attach using the compression union. Loosen the nut and push the line into the union. Tighten securely but be careful not to over tighten as the supply hose may split.



## MAINTENANCE

Throughout the season, check your discs periodically for wear. When the bottom point of the scraper is less than  $\frac{3}{8}$ " from the edge of the disc or the scraper no longer sits entirely within the circumference of the disc, remove a shim from the bottom of the mounting arm and move it to the top. This moves the scraper away from the edge of the disc. Once all the shims are removed and the disc is larger than 17" in diameter, repeat steps 5 and 6 to reposition the scraper on the smaller disc.

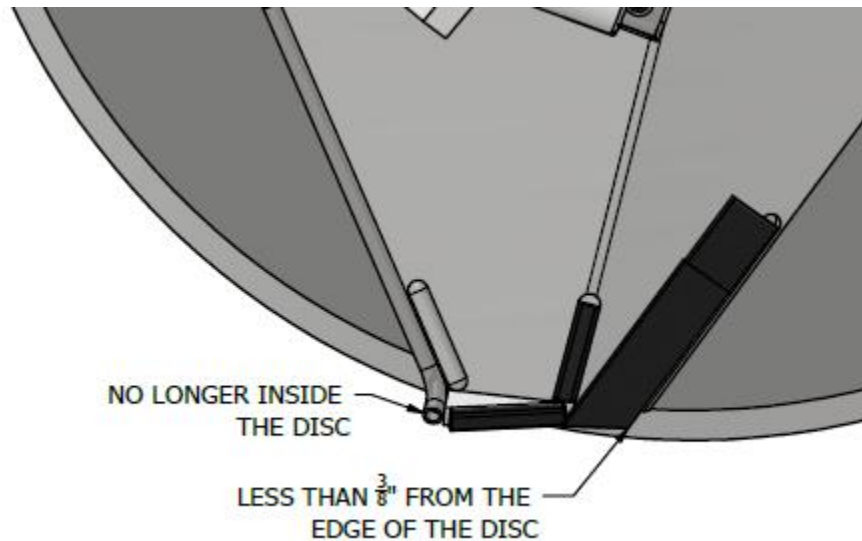


Figure 11: Conditions to reposition the scraper