



LEADERSHIP THROUGH INNOVATION

CLOSED-CENTER SYSTEMS // OPEN-CENTER SYSTEMS

POOR HYDRAULICS?  
**WE HAVE THE SOLUTION**



**ATOM-JET HYDRAULIC SYSTEM**  
YOUR SATISFACTION IS GUARANTEED\*

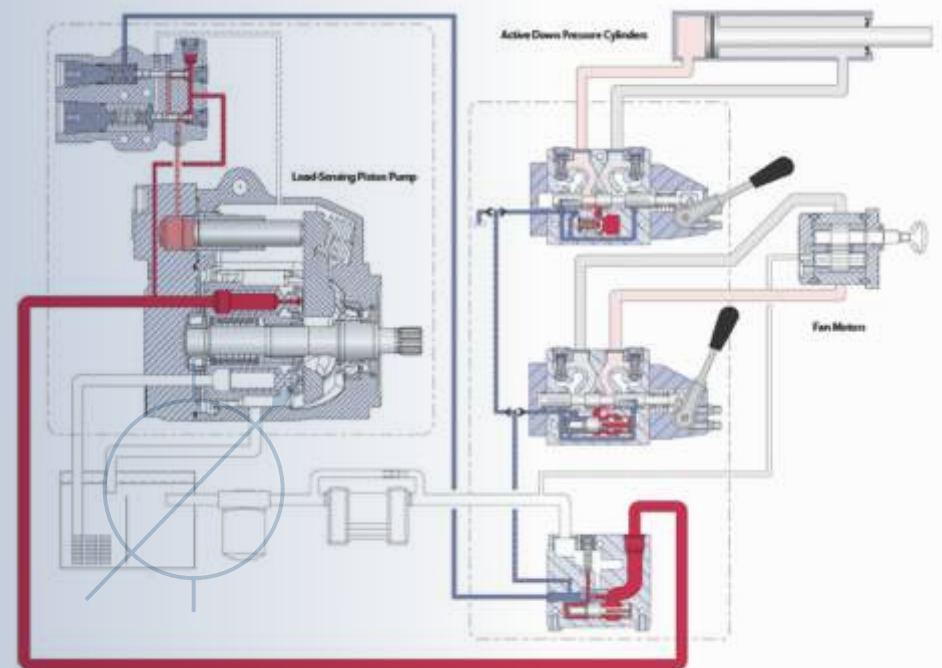


# ATOM-JET HYDRAULIC SYSTEM

## YOUR SATISFACTION IS GUARANTEED

Is the high cost to replace your tractor forcing you to put up with poor performance? As expenses rise, producers are forced to make creative decisions to remain profitable. Motivated by our vision of Leadership Through Innovation, Atom-Jet Custom Hydraulics provide the solution.

Across a variety of applications, our add-on systems allow your existing tractor to operate modern implements, increasing productivity while saving you money. By extending the working life of early model tractors across the globe, Atom-Jet's Custom Hydraulics are a reliable resource to help you improve productivity and profitability. Backed by our industry-leading money-back guarantee, investing with Atom-Jet provides you peace of mind. Stay competitive in a global market. Contact Atom-Jet today.



# CLOSED-CENTER SYSTEM

## FOR HIGH DEMAND APPLICATIONS

Our Closed-Center, Load-Sensing systems match the capacity delivered by the pump to the load requirements. This allows for an increased range of flow without the headaches of overheating issues. Providing an additional 40 gpm at 3,000 psi, we ensure you won't be left short when you need power.

### ■ Compatible with:

- Air Cart Fans
- Grain Carts
- Sprayers
- Active Shank Drills

### ■ In-Cab Flow Control







## TRACTOR MODELS AVAILABLE

<b>Versatile</b>	750, 800, 825, 835, 850, 855, 875, 895, 900, 935, 945, 950, 955, 975, 1150
<b>Ford/Versatile Designation 6</b>	936, 946, 956, 976 (with 855 Cummins Engine only)

## SYSTEM SPECIFICATIONS

<b>Type</b>	Closed-Center, Load-Sensing
<b>Hydraulic Flow</b>	40 Gallon Per Minute
<b>Maximum Pressure</b>	3,000 Pound Per Square Inch
<b>Control Valving</b>	Proportional Spool
<b>Control Type</b>	12 VDC Proportional Joystick
<b>Hydraulic Reservoir</b>	<b>Versatile Tractors:</b> Add-On 30 Gallon Capacity <b>All Others:</b> Existing Reservoir

## OPTIONAL UPGRADES

<b>Quick Couplers</b>	3/4"
<b>Heat Exchanger</b>	Radiator Mounted or Electric Fan Blown

# OPEN-CENTER SYSTEM

## FOR BASIC APPLICATIONS

Our Open-Center hydraulic system provides an economical solution for custom designed single-motor applications that only require one set of quick couplers.

This system is complete with in-cab joystick control and can be specifically matched to your application with flow ranges of 18, 23 and 26 gpm at 3,000 psi.

Whether it's driving an air fan or controlling a water pump, our Open-Center applications can be designed to address a variety of needs.





## TRACTOR MODELS AVAILABLE

<b>Versatile</b>	750, 800, 825, 835, 850, 855, 875, 895, 900, 935, 945, 950, 955, 975,
<b>Ford/Versatile Designation 6</b>	936, 946, 956, 976 (with 855 Cummins Engine Only)
<b>Case IH Steiger 9100, 9200 &amp; 9300 Series</b>	<b>Transmission Mount Pump:</b> with Power-Shift Transmission, without PTO or 3-Point Hitch <b>Engine Mount Pump:</b> 855 & N14 Engines

## OPTIONAL UPGRADES

<b>Quick Couplers</b>	$\frac{3}{4}$ "
<b>Heat Exchanger</b>	Radiator Mounted or Electric Fan Blown
<b>Tractors With Dozer Blades</b>	Versatile Kits Can Be Supplied Without Reservoir If Tractors Are Equipped With A Dozer Blade

## SYSTEM SPECIFICATIONS

<b>Type</b>	Open-Center
<b>Hydraulic Flow</b>	18, 23 & 26 Gallon Per Minute Configurations
<b>Maximum Pressure</b>	3,000 Pound Per Square Inch
<b>Control Valving</b>	Proportional Spool
<b>Control Type</b>	12 VDC Proportional Joystick
<b>Hydraulic Reservoir</b>	<b>Versatile Tractors:</b> Add-On 30-Gallon Capacity <b>All Others:</b> Existing Reservoir



2110 Park Avenue, Brandon, Manitoba, Canada R7B 0R9  
Phone: 1-800-573-5048 Fax: 204-726-5734 Email: [info@atomjet.com](mailto:info@atomjet.com) [www.atomjet.com](http://www.atomjet.com)

Atom-Jet Industries reserves the right to make improvements in design and changes in specifications at any time without notice and without incurring any obligation to install them on units previously sold. Specifications, descriptions and illustrative material herein are as accurate as known at the time of publication but are subject to change without notice.

**Terry Drayson**

Territory Sales Manager  
Manitoba

P. 1-204-570-2559

E. [tdrayson@atomjet.com](mailto:tdrayson@atomjet.com)

**Chris Cardy**

Territory Sales Manager  
Saskatchewan

P. 1-306-201-8211

E. [ccardy@atomjet.com](mailto:ccardy@atomjet.com)

**Scott Nutzhorn**

Territory Sales Manager  
Alberta, NorthWest U.S.

P. 1-306-690-1166

E. [snutzhorn@atomjet.com](mailto:snutzhorn@atomjet.com)

**Bill Thomas**

Bill Thomas Sales  
Montana, North Dakota,  
Minnesota & South Dakota

P. 1-204-570-2559

E. [wthomas@srt.com](mailto:wthomas@srt.com)

**Mark Schilling**

AG Schilling & Co  
Australia

P. 08-88257224

E. [agschilling.com.au](mailto:agschilling.com.au)